

1 **Transpiration of table grape (*Vitis vinifera* L.) trained on an overhead trellis**  
2 **system under netting**

3 K. Suvočarev<sup>1</sup>, O. Blanco<sup>2</sup>, J.M. Faci<sup>2</sup>, E.T. Medina<sup>2</sup>, A. Martínez-Cob<sup>3</sup>

4 <sup>1</sup> Department of Soil and Water, Estación Experimental Aula Dei (EEAD), CSIC, Avda.  
5 Montañana 1005, 50059 Zaragoza, Spain. E-mail: [suvocarev@eead.csic.es](mailto:suvocarev@eead.csic.es).

6 <sup>2</sup> Unidad de Suelos y Riegos (Unidad Asociada EEAD-CSIC), Centro de Investigación y  
7 Tecnología Agroalimentaria de Aragón (CITA, DGA), Avda. Montañana 930, 50059  
8 Zaragoza, Spain.

9 <sup>3</sup> Department of Soil and Water, Estación Experimental Aula Dei (EEAD), CSIC, Avda.  
10 Montañana 1005, 50059 Zaragoza, Spain.

11

12 **Abstract**

13 The quantification of transpiration and corresponding basal crop coefficients is crucial  
14 for appropriate irrigation scheduling of drip irrigated crops. Besides basal crop  
15 coefficients already published, there is the announcing need for setting values for the  
16 new growing practices such as cropping under netting. In this paper, measurements of  
17 unstressed table grape transpiration and basal crop coefficients under netting have  
18 been performed. Vineyards of two seedless cultivars (Crimson and Autumn Royal) were  
19 trained on an overhead trellis system which permitted the ground cover to reach values  
20 up to 90%. Two campaigns of mid-season measurements were performed using one of  
21 the heat pulse techniques available (that known as the Tmax approach). Obtained  
22 values for average seasonal daily transpiration ranged between 3.9 and 4.4 mm day<sup>-1</sup>,  
23 for both cultivars, depending on the period considered. Weekly averages of the basal

1 crop coefficients, from mid-May to end-September, ranged from 0.47 to 0.87. A  
2 polynomial equation was fit to the measured basal crop coefficients as a function of  
3 fraction of thermal units. After further validation for other cultivars with different  
4 cumulative thermal requirements, this equation could be considered helpful for farmers  
5 as a practical estimate of the table grape basal coefficient under the netting.

6

## 7 **Introduction**

8 Table grape (*Vitis vinifera* L.) is a profitable crop in semiarid regions of Spain  
9 achieving great yields and very high fruit quality (Blanco et al. 2010). Table grape  
10 vineyards encompassed 19,500 ha in Spain, second in Europe behind Italy (OIV, 2006).  
11 Most vineyards (82%) are irrigated (Anuario de Estadística Agroalimentaria 2008).

12 Due to the water shortage in semiarid areas, knowledge of crop water requirements  
13 (i.e. evapotranspiration, ET) is paramount for adequate irrigation scheduling and  
14 management. Crop evapotranspiration ( $ET_c$ ) depends upon environmental conditions,  
15 crop characteristics (such as trellis system and planting density), ground cover fraction,  
16 and cultural practices (such as fertilization and irrigation management). Seasonal table  
17 grape  $ET_c$  has been reported to range between 687 mm and 1,350 mm for  
18 Mediterranean climate in California (Williams et al. 2003; Williams and Ayars 2005),  
19 semiarid climate in Israel (Netzer et al. 2009), arid Mexican climate (Rodríguez et al.  
20 2010) and for Spanish Mediterranean (Moratíel and Martínez-Cob, 2012).

21  $ET_c$  is often estimated as the product of the reference crop evapotranspiration ( $ET_o$ )  
22 and a crop coefficient ( $K_c$ ):  $ET_c = K_c ET_o$  (Allen et al. 1998). The  $ET_o$  reflects the effect of  
23 the meteorological conditions on the evapotranspiration process and must be estimated

1 from meteorological data recorded at a standard reference weather station using the  
2 FAO Penman-Monteith approach. The  $K_c$  includes all features of the cropping systems:  
3 species, crop architecture, management, etc. (Allen et al., 1998). The  $K_c$  is estimated as  
4 a function of crop growth stage, canopy height, local climate, plant architecture, ground  
5 cover fraction, and crop management among others. Allen et al. (1998) showed  
6 procedures to estimate  $K_c$  as a single crop coefficient or as a dual crop coefficient, i.e.  
7 as the sum of two components, basal crop coefficient ( $K_{cb}$ ) due to transpiration, and  
8 evaporation coefficient ( $K_e$ ) due to soil evaporation:  $K_c = K_{cb} + K_e$ . Allen and Pereira  
9 (2009) applied the procedures described by Allen et al. (1998) to present tabulated  
10 values of both  $K_c$  (single approach) and  $K_{cb}$  (dual approach) as a function of several  
11 ground cover fractions for different horticultural and orchard crops.

12 Recently, the use of insect-proof netting has widespread in orchard crops to reduce  
13 pesticide applications, radiative load during summer and hail and bird damage. The  
14 netting has a relatively low cost compared to total production costs in these orchard  
15 crops. Netting might have an important effect on microclimate and crop water  
16 requirements. Some authors have studied the effect of netting on the microclimate of  
17 different horticultural crops such as sweet pepper (Tanny et al. 2003; Möller et al. 2004;  
18 Möller and Assouline 2007) and banana (Tanny et al. 2006; Tanny et al. 2010). For  
19 sweet pepper, a 38% decrease of evapotranspiration due to reduced incoming solar  
20 radiation and wind speed has been reported (Möller and Assouline 2007). In the banana  
21 greenhouse experiment a reduction of radiation between 8-25% was reported,  
22 depending on cleanness and aging of the polyethylene screen. Also, it is shown that

1 presence of a screen reduces the velocity statistics responsible for turbulent transport  
2 and the effective roughness of the surface.

3 There is little information about the effect of netting on crop water use in table  
4 grapes. Rana et al. (2004) studied the effects of different types of netting (uncovered,  
5 thin net and thin plastic film) on table grape ET (cv. Italia) with a complete ground cover.  
6 Their results present calculated mid-season  $K_c$  values for unstressed table grape  
7 vineyards of 1.0 for the uncovered vineyard, 0.9 for the thin net cover, and 0.86 for the  
8 thin plastic film. These values must not be considered  $K_c$  as defined by Allen et al.  
9 (1998) but as 'adjusted'  $K_c$  that contain the reduction as the consequence of the netting.  
10 Moratiel and Martínez-Cob (2012) studied the simultaneous effect of the netting and a  
11 black-plastic mulching on the  $K_c$  of 'Red Globe' table grape grown under a gable trellis  
12 system. They estimated weekly  $K_c$  values (adjusted for the effects of the netting and the  
13 mulching) ranging between 0.64 and 1.2 along the season, while the average adjusted  
14  $K_c$  values during mid and end-season stages were 0.79 and 0.98, respectively. Moratiel  
15 and Martínez-Cob (2012) estimated a netting coefficient (0.65) representing the  
16 reduction effect of the netting on  $K_c$ . The works of Rana et al. (2004) and Moratiel and  
17 Martínez-Cob (2012) include all the effects of the netting on the  $K_c$  as this coefficient, as  
18 defined by Allen et al. (1998), should reflect the different characteristics of the cropping  
19 system.

20 Frequently, table grape vineyards are trained on an overhead trellis system which  
21 leads to an almost full ground cover shading. This, and the use of netting in drip  
22 irrigated table grapes grown in semiarid regions, cause that transpiration represents  
23 most of the total ET during mid-season stages due to minimum soil evaporation

1 because wetted soil surface areas are shaded (Allen et al. 1998), and to the low rainfall  
2 that generally occurs during that stage. Therefore, the quantification of transpiration  
3 becomes crucial for appropriate irrigation scheduling of such drip irrigated crops. To our  
4 knowledge, no previous works have been reported on the effect of the netting on table  
5 grape transpiration.

6 The aim of this research was to determine the transpiration of two seedless cultivars  
7 of table grape, Crimson and Autumn Royal, grown under the semiarid conditions of the  
8 central Ebro River Valley in Spain. These vineyards were trained on an overhead trellis  
9 system and grown under netting. Measurements were carried out along two campaigns  
10 during the mid-season stage and the corresponding basal crop coefficients ( $K_{cb}$ ) were  
11 obtained. It was aimed that these  $K_{cb}$  include all effects of the netting on the  
12 transpiration through a “netting coefficient” ( $K_{ne}$ ) so this coefficient can allow scheduling  
13 irrigations of this cropping system (table grape grown under an overhead trellis system  
14 and netting) following the guidelines proposed in Allen et al. (1998).

15

## 16 **Material and methods**

### 17 **Site and crop**

18 The study was conducted on a commercial table grape vineyard at the farm Santa  
19 Bárbara, in Caspe (Zaragoza, NE Spain) during 2008 (15 July to 30 September) and  
20 2009 (15 May to 30 September). The geographical coordinates of the farm are 41°16' N  
21 latitude, 0°02' W longitude, and 147 m elevation above the sea level. The long-term  
22 annual average meteorological conditions in the area are described in Martínez-Cob  
23 and Faci (2010). According to this reference annual precipitation is 315 mm; mean air

1 temperature is 14.9 °C; minimum air relative humidity is 41%; mean global solar  
2 radiation is 185 W m<sup>-2</sup>; mean wind speed at 2 m above ground is 3.1 m s<sup>-1</sup>; the annual  
3 reference evapotranspiration is 1,392 mm.

4 The 4.0 ha commercial table grape vineyard was divided in two experimental  
5 subplots, each with a different cultivar: A) Crimson; B) Autumn Royal; both cultivars  
6 were grafted on Richter 110 rootstock. This vineyard was surrounded by other table  
7 grape vineyards (Blanco et al. 2010; Moratiel and Martínez-Cob 2012). Row direction  
8 was approximately northwest to southeast. The vineyard was trained on an overhead  
9 trellis system, and was covered with a net made of a thread warp of high-density  
10 polyethylene (Criado and López, Almería, Spain) to protect the vines from hail, birds,  
11 and insects. This netting was transparent with individual pores of 12 mm<sup>2</sup> (2.2 mm x 5.4  
12 mm) and was placed at a height of 3.0 m above ground level just above the canopy  
13 level. The vineyard had a slope of 1%. The soil at the 'Crimson' subplot was sandy  
14 except for the upper 0.1 m (sandy loam), and was classified as Xeric haplogypsid,  
15 sandy, mixed (gypsic), thermic. The soil at the 'Autumn Royal' subplot was sandy loam  
16 and classified as Xeric calcigypsid, coarse loamy, mixed (gypsic), thermic (Soil Survey  
17 Staff, 1999, 2006). Nevertheless, the uppermost soil layer in-between rows (about 0.1  
18 m) were used to create a ridge where the plants were established. The ridge was  
19 directly beneath the vines in each row; its dimensions were 0.5 m in width and 0.4 m in  
20 height. Thus the actual texture within the root zone was sandy loam in both vineyards.  
21 Table 1 lists some of the physical and chemical properties of these soils that were  
22 determined at the laboratory from soil samples taken at two trial-pits opened in the  
23 vineyard.

1 The vineyard was irrigated with a drip irrigation system with one lateral in each row  
2 of vines with integrated self compensating emitters of a discharge of  $2.2 \text{ L h}^{-1}$ , spaced  
3 0.5 m. A volumetric water meter was placed at the inlets of the two experimental  
4 vineyard subplots to register the irrigation depth applied to each cultivar. Daily drip  
5 irrigation from May to September was applied following the farm manager's criteria.  
6 These criteria were based on FAO Penman-Monteith estimations of  $ET_o$ ,  $K_c$  values  
7 tabulated by Allen et al. (1998), and adjustments for ground cover fraction irrigation  
8 uniformity and leaching requirements. Other management practices (herbicide and  
9 fertilizer applications and pruning) were also conducted according to the farm  
10 manager's criteria. Herbicides were periodically applied between rows to control weeds.  
11 Vines were winter pruned. However, in 2009 an additional summer pruning of the  
12 shoots in a strip 0.5 m wide between vine rows was performed for the cultivar Crimson  
13 around veraison, to allow a better penetration of light in the canopy to enhance the  
14 berries quality and to increase color uniformity.

15

#### 16 Transpiration measurements

17 Table grape transpiration was measured during the mid-season stage of the crop.  
18 For 'Crimson', data was recorded in two seasons: a) 2008 (15 July to 30 September); b)  
19 2009 (15 May to 30 September). For 'Autumn Royal', measurements were taken only in  
20 2009, from 15 May to 21 August. The heat pulse method was used (Green et al. 2003).  
21 Other authors have also applied this method to measure grape transpiration (Yunusa et  
22 al. 1997; Yunusa et al. 2004; Pereira et al. 2006; Fernández et al. 2008; Green 2008;  
23 Zhang et al. 2011). The heat pulse method can be applied using different approaches.

1 In this paper, that known as Tmax was chosen due to the relatively large xylem vessels  
2 of table grapes (Green et al. 2003).

3 The instrumentation for monitoring the sap flow was provided by Tranzflo  
4 (Palmerston North, New Zealand). During 2008, two vines of 'Crimson' were monitored  
5 using one set of probes per vine. During 2009, three vines of each cultivar were  
6 monitored using two sets of probes per vine. Each set of probes consisted of a line  
7 heater and two temperature probes, all of them of 1.8 mm diameter. Each set was  
8 installed into parallel holes drilled radially into the stem at heights of about 0.8-1.0 m  
9 above the ground. The temperature probes of each set were placed at 10 and 40 mm  
10 above the heater (Green et al. 2003). Each temperature probe had three thermocouples  
11 at 5, 10 and 15 mm depths.

12 One datalogger (CR3000 in 2008) or two dataloggers (CR23X in 2009, one for each  
13 cultivar) Campbell Scientific (Shepshed, UK) were used to activate the heater for 2 s  
14 each half hour. The pair of temperature sensors was used to monitor the subsequent  
15 changes in stem temperature at the three abovementioned depths. These changes  
16 occurred as the heat pulse propagated through the sapwood. The dataloggers  
17 interpreted the temperature signals after each heat pulse and determined the time until  
18 a peak temperature difference ( $t_M$ ) was observed for each depth. Thus, for each set of  
19 probes and depth, a series of half-hour values of  $t_M$  were collected by the datalogger for  
20 further analyses. These analyses followed the procedure described by Green et al.  
21 (2003). Thus, corrected heat pulse velocity,  $V_c$  ( $\text{cm h}^{-1}$ ) was calculated as:

22

$$23 \quad V_c = a_0 + a_1 V_M + a_2 V_M^2 \quad [1]$$



1 where:  $a_0$ ,  $a_1$ , and  $a_2$  are correction factors to take into account the effect of the  
2 installation wound width; chosen from tabulated values considering that wound width  
3 was 3.2 mm (Green et al. 2003);  $V_M$ , uncorrected heat pulse velocity ( $\text{cm h}^{-1}$ ):

$$4 \quad V_M = 3600 \frac{\sqrt{x_D^2 - 4 \kappa_d t_M}}{t_M} \quad [2]$$

5 where:  $x_D$  is downstream distance from line heater, 1.0 cm;  $\kappa_d$  is the thermal diffusivity  
6 estimated as  $8.33 \times 10^{-4} \text{ cm}^2 \text{ s}^{-1}$  at times when zero sap flow occurs (Green et al. 2003);  
7 in this paper, it was assumed that zero sap flow occurs if  $t_M = 300 \text{ s}$  as this was the  
8 highest value recorded during the measurement period.

9 Next, the sap flow,  $J_s$  ( $\text{cm h}^{-1}$ ) at each depth (5, 10 and 15 mm) was obtained as:

10

$$11 \quad J_s = (k F_M + F_L) V_C \quad [3]$$

12 where:  $F_M$  and  $F_L$  are the volume fractions of wood and water, respectively, and  $k =$   
13 0.441 is a factor related to the thermal properties of the woody matrix (Green et al.  
14 2003).  $F_M$  and  $F_L$  were determined experimentally from wood samples taken from the  
15 monitored vines: three times during 2008 (1 August, 29 August and 3 October) and four  
16 times during 2009 (14 May, 2 July, 12 August and 21 October) (Table 2). The fresh  
17 weight of each wood sample was determined just right after taking it out. The  
18 dimensions (base radius and height) of the sample were also measured to determine  
19 the wood sample volume ( $V_T$ ). Later, the sample was oven-dried to determine the mass  
20 of dry wood ( $m_M$ ) and the mass of water ( $m_L$ ) contained in the fresh sample. Then  $F_M$   
21 and  $F_L$  were computed as:

1 
$$F_M = \frac{m_M}{\rho_M V_T} \quad [4]$$

2 
$$F_L = \frac{m_L}{\rho_L V_T} \quad [5]$$

3 where:  $\rho_M$ , is dry wood density taken as  $1500 \text{ kg m}^{-3}$  (Green, 2009) and  $\rho_L$  is water  
4 density taken as  $1000 \text{ kg m}^{-3}$ .

5 Finally, the half-hour volume sap flux,  $F \text{ (L h}^{-1}\text{)}$  was determined integrating the  $J_s$   
6 values at the three depths following the procedure described by Hatton et al. (1990) for  
7 which the radius of each vine at the cambium was required (Table 2). Daily transpiration  
8 values ( $\text{mm day}^{-1}$ ) were obtained summing up the half-hour values and dividing by the  
9 surface area allocated for each vine ( $3.5 \text{ m} \times 2.5 \text{ m}$ ). During 2009, the  $F$  values of the  
10 two set of probes at each vine were averaged to get a single half-hour  $F$  value for that  
11 vine.

12 An assessment of the reliability of the experimentally derived transpiration data was  
13 performed by comparing them with the table grape (cv. Red Globe) evapotranspiration  
14 values recorded by the surface renewal method (SR) at a plot next to that of this study  
15 (Moratíel and Martínez-Cob, 2012). These evapotranspiration values were almost equal  
16 to transpiration particularly during summer (Moratíel and Martínez-Cob, 2012) as soil  
17 evaporation was highly reduced by a black plastic mulching. The SR method has  
18 already proven its accuracy on a wide range of crops with different canopy architectures  
19 and management conditions, including vineyards (Paw U et al. 2005, Castellví and  
20 Martínez-Cob, 2005; Castellví et al. 2006, 2008; Spano et al. 2008; Castellví and  
21 Snyder 2009, 2010). Moratíel and Martínez-Cob (2012) provide a detailed description of

1 the surface renewal measurements. This assessment was only performed for year 2008  
2 as the Red Globe evapotranspiration data was collected for 2007 and 2008.

3 Experimental basal crop coefficients ( $K_{cb\_exp}$ ) under the netting were obtained as:  
4  $K_{cb\_exp} = Tr/ET_o$ , where  $Tr$  is the daily transpiration and  $ET_o$  is the daily reference  
5 evapotranspiration, computed using the FAO Penman-Monteith method (Allen et al.  
6 1998). The daily meteorological variables (wind speed, solar radiation, air temperature,  
7 and relative humidity) for  $ET_o$  calculation were recorded at a standard weather station,  
8 located over grass following Allen et al. (1998) guidelines. It was located about 1 km  
9 north from the vineyard ('grass weather station'). This station belongs to a network  
10 named SIAR installed and managed by the Spanish Ministry of Rural and Marine  
11 Environment (<http://www.mapa.es/siar/>). It should be noted that these  $K_{cb\_exp}$  values are  
12 adjusted basal crop coefficients that take into account the effect of the netting. It was  
13 assumed that this management practice would reduce the vineyard transpiration and  
14 the  $K_{cb}$  compared to a similar vineyard managed without that management practice.  
15 Thus, these  $K_{cb\_exp}$  values would represent the optimum (potential) transpiration of the  
16 crop under the netting.

17

#### 18 Additional measurements

19 A standard meteorological station was installed at the Crimson experimental subplot  
20 (in-situ). It consisted of a pyranometer (Kipp & Zonen, CM3), a switching anemometer  
21 (Vector instruments, A100R), and an air temperature and relative humidity probe  
22 (Vaisala, model HMP45C). All sensors were installed above the canopy, just below the  
23 netting. The measurements of the in-situ station were compared to those recorded at

1 the 'grass weather station' (SIAR). The average ratios of each variable at both stations  
2 were used to estimate the netting effect on "reference" evapotranspiration following the  
3 procedure described in detail in Moratíel and Martínez-Cob (2012).

4 Soil volumetric water content was measured at 0.1, 0.2 and 0.3 m depth with two  
5 frequency domain reflectometry (FDR) probes (Enviroscan, Sentek, Pty Ltd. South  
6 Australia). Each sensor of the probe has its own factory calibration and following the  
7 manufacturer's user manual, these probes were normalized at the laboratory before  
8 installation. With the probe inside the access tube, readings of the sensors were  
9 performed in the air and in a normalization chamber filled with water. The readings of  
10 each sensor in the air and in the water chamber were input in the datalogger for the  
11 configuration of the commercial calibration equation of each sensor to convert the  
12 readings into volumetric soil water content. The probes were installed within the crop  
13 row at 0.5 and 1.25 m from a central vine, to obtain values of the soil water content in  
14 the area wetted by the emitters. Soil water content readings were continuously taken  
15 each hour. The relatively important percent of gravel (Table 1) precluded the  
16 measurement of soil water content deeper than 0.5 m. Nevertheless, most of rooting  
17 activity of crops under drip irrigation is commonly found within the upper 0.4-0.5 m soil  
18 layer (Steven and Douglas, 1994; Fernandez and Moreno, 1999; Soar and Loveys,  
19 2007; Searles et al., 2009). As a consequence, readings deeper than 0.3 m were not  
20 taken. More details about these readings can be found in Blanco et al. (2010).

21 Phenological stages by visual observation, canopy cover evolution by digital  
22 photography, and yield at harvest were also recorded. Pictures of ground cover were  
23 taken with a digital camera (Olympus, model  $\mu$ 810, China). The camera was set on the

1 ground and focused upwards to capture a quarter of the space that belongs to a vine  
2 (1.25 × 1.75 m). The images were processed with the GIMP program (available at  
3 [www.gimp.org](http://www.gimp.org)). The program transforms the picture into black pixels that represent  
4 leaves and branches while the white ones reflect clear screen. After calculating the  
5 black and white pixels and presenting them on histogram, a value of the percentage of  
6 the black pixels which represents the shaded ground cover was derived (Blanco et al.  
7 2010).

8 Thermal units (TU) were estimated using the University of California Statewide  
9 Integrated Pest Management Project's website  
10 (<http://www.ipm.ucdavis.edu/WEATHER/index.html>). Thermal units were calculated  
11 using the single sine method with a lower threshold of 10 °C from budbreak up to  
12 harvest. Finally, stem water potential was measured at solar noon in 3-5 exposed  
13 leaves per vine for each cultivar during three different dates during 2009. The exposed  
14 leaves were sealed in foil laminate bags to prevent overheating by the sun and to allow  
15 leaf water potential to equilibrate to that of the stem. Measurements were made using a  
16 Scholander pressure chamber (M3115, ICT, Armidale, Australia).

17

## 18 **Results and discussion**

19

20 Meteorological conditions, phenology and water status

21 Figure 1 shows the weekly totals of precipitation and the weekly averages of air  
22 temperature, vapour pressure deficit and wind speed at 2 m above ground recorded at  
23 the nearby SIAR station from 15 May to 30 September for both seasons. Precipitation

1 was higher for 2008 (122 mm) than for 2009 (74 mm). The largest difference between  
2 both seasons occurred for the period from 15 May to 18 June during which 53.9% of the  
3 total seasonal precipitation was recorded for 2008 but only 16.6% for 2009. Weekly total  
4 precipitation exceeded 10 mm only for two weekly periods during 2009 but for six  
5 weekly periods for 2009. Warmer temperatures for 2009 were observed for 17 of the 20  
6 weeks included in the period from 15 May to 30 September. In general, the largest  
7 differences between both seasons occurred during the period from 15 May to 18 June.  
8 Vapor pressure deficit (VPD) was higher for 2009, 0.4 kPa in average. The highest  
9 differences were observed for the period from 15 May to 18 June and for mid-August.  
10 The 2009 season was only slightly windier ( $0.2 \text{ m s}^{-1}$  in average) than the 2008 season.  
11 The highest differences occurred during May and mid-July. Summarizing, the 2009  
12 season was drier, warmer and the evaporative demand was higher. Thus the total  
13 season  $ET_o$  estimated at the SIAR station for the period from 15 May to 30 September  
14 was 938 mm for 2009 and 842 mm for 2008.

15 Some differences in the phenology of the studied cultivars were observed for both  
16 years (Table 3). For 'Crimson', despite a later budbreak, the 2009 season was about  
17 one month shorter than that for 2008. The season length for 'Autumn Royal' from  
18 budbreak to harvest during 2009 also was sharply shorter (35 days) than that for  
19 'Crimson'. The measurements taken in this study started around three weeks before  
20 veraison in 2008 and about 1-2 weeks before flowering in 2009. The different phenology  
21 observed for 'Crimson' for both seasons was due to the warmer conditions of 2009 for  
22 the period from 15 May to 30 September (Figure 1). These warmer conditions for 2009  
23 led to a higher cumulative TU value for 'Crimson' from budbreak to harvest: 2,381 °C for

1 2009 and 2,245 °C for 2008. The cumulative TU values before 15 May indicate that  
2 early spring was colder for 2009 and this would explain the later budbreak for 'Crimson'.  
3 But, as the 2009 season was warmer since the end of May (Figure 1), the cumulative  
4 TU for 'Crimson' exceeded that for 2008 and then the development of 'Crimson'  
5 fastened compared to 2008. As a consequence, flowering dates were similar for both  
6 years, while veraison and harvest dates occurred sooner for 2009. A similar behaviour  
7 was observed for 'Autumn Royal' (Table 3) its shorter season length as compared to  
8 'Crimson' is also reflected in a lower value of cumulative TU value from budbreak to  
9 harvest (2,140 °C).

10 Figure 2 shows the evolution of ground cover fraction (i.e. fraction of the soil being  
11 shaded by the crop canopy) along both 2008 and 2009 seasons. Most of the  
12 measurements were taken for a ground cover fraction above 70-80%, i.e. during the  
13 mid-season stage as defined by Allen et al. (1998), except for those during May, taken  
14 during the last part of the development stage. For both cultivars and seasons, ground  
15 cover fraction started to decline slightly after reaching a maximum value of 90% around  
16 mid-August (day of the year, DOY, 230; TU, 1400 °C) (Figure 2). For 'Crimson' during  
17 2009, the decline in ground cover fraction was slightly higher because the farm's  
18 manager made a leaf clearance at the beginning of August in the middle area between  
19 rows to improve colour uniformity of the berries.

20 For the period from 15 May to 30 September, the irrigation amounts applied for  
21 'Crimson' for 2009 (532 mm) were higher than for 2008 (446 mm) as a consequence of  
22 the meteorological conditions (warmer and drier for 2009) (Table 4). The largest  
23 differences were observed for May to July when the differences between the

1 meteorological conditions among the two seasons were largest. The irrigation amounts  
2 applied for 'Autumn Royal' for 2009 (581 mm) also were higher than those applied for  
3 'Crimson' for the same season (Table 4). The daily irrigation of 'Autumn Royal' was  
4 generally split in two moments (night and noon) as the farm's manager believed that this  
5 practise would reduce the potential berry cracking problem that may appear with  
6 sudden supplies of great amounts of water (Blanco et al. 2010).

7 Figure 3 shows the evolution of hourly soil water content along the measurement  
8 periods during 2008 and 2009 for both cultivars. These values must be considered as  
9 relative instead of absolute according to the manufacturer. There was a strong daily  
10 fluctuation in this variable due to the daily drip irrigation. In general, the limits of these  
11 fluctuations kept around similar values along the season (Figure 3). Just after the  
12 irrigation, there was a sudden increase of the soil water content reaching the upper  
13 limits. Later, there was a smoother decrease of that variable as water infiltrated into the  
14 soil, was absorbed by the crop, and drained out the root zone. Some drainage was  
15 required to keep the soil salinity within the current values (Table 1). These fluctuations  
16 were larger at 0.1 m, i.e. near soil surface, and shorter at 0.2 and 0.3 m. There was a  
17 period (second half of June 2009) with a lack of daily fluctuations due to maintenance  
18 and repairing of the irrigation pump system. Therefore, these values suggest that the  
19 crop was sufficiently watered and did not suffer water stress, i.e. the measured  
20 transpiration values correspond to a cropping system under optimal conditions. For  
21 2009, the mid-day stem water potential values recorded at three different dates (5  
22 August, 2 September and 2 October for 'Crimson'; 16 July, 26 August and 2 September  
23 for 'Autumn Royal') ranged from -0.41 to -0.88 MPa for 'Crimson' and from -0.49 to -



1 0.61 MPa for 'Autumn Royal'. These values were below the threshold values for setting  
2 water stress for table grapes (Patakas et al. 2005; Williams and Baeza 2007).

3 In average, the ratios of solar radiation, wind speed, air temperature and relative  
4 humidity at the Crimson subplot to the corresponding variables at the SIAR station were  
5 0.865, 0.153, 1.014 and 1.027, respectively. Using these ratios to 'correct' the  
6 meteorological values recorded at the SIAR station, the ratio of the 'corrected'  $ET_o$  to  
7 that originally computed was 0.67 in average (Figure 4). Therefore it can be considered  
8 that that value, 0.67, can be used as a rough estimation of the reduction coefficient for  
9 evapotranspiration due to netting ( $K_{ne}$ ). Moratiel and Martínez-Cob (2012) got a similar  
10 value, 0.65; both nettings were similar at the close 'Red Globe' vineyard grown under  
11 similar netting. Möller and Assouline (2007) reported a 38% reduction (i.e. a reduction  
12 coefficient of 0.62) of sweet pepper evapotranspiration due to reduced incoming solar  
13 radiation and wind speed because of the netting. It is also interesting to note that the  
14 ratio of solar radiations at both stations indicate that, in average, the netting reduced  
15 incoming solar radiation by about 13.5 %, i.e. the netting reflected and absorbed about  
16 13.5 % of the incoming solar radiation.

17 Thus assuming that transpiration is almost equal to evapotranspiration in these  
18 types of table grape vineyards because of the high ground cover fraction, it could be  
19 possible to state that the netting would reduce transpiration by about 30 to 35%  
20 although this figure should require further research due to the rough comparisons  
21 discussed in the previous paragraph. However the aim of this paper was to get  
22 appropriate crop coefficients for the studied cropping system such that they could be  
23 applied following the guidelines by Allen et al. (1998). Remind that the  $ET_o$  must be

1 computed from meteorological variables recorded at reference stations. In addition, for  
2 the particular cropping system studied in this work,  $ET_c = ET_o K_c K_{ne}$ . Assuming that soil  
3 evaporation is minimal for this cropping system due to the high ground cover fraction,  
4  $ET_c \approx Tr$  (being  $Tr$ , crop transpiration) and  $K_c \approx K_{cb}$  in this case. Then the above  
5 expression can be rewritten as  $Tr = ET_o (K_{cb} K_{ne})$  such that the experimental basal crop  
6 coefficients obtained in this paper would represent the 'adjusted'  $K_{cb}$  due to the netting.  
7 This statement is only valid once the ground cover fraction becomes 70 % or higher  
8 (Figure 2), i.e. for the mid-season and late-season crop growing stages. The effect of  
9 the netting on basal crop coefficient during early stages would require further research.

10

#### 11 Transpiration

12 Table 5 shows several statistics (mean, median, coefficient of variation, and  
13 percentiles 25 and 75 %) that allow the comparison of the transpiration measurements  
14 within the same plant and between plants of the same cultivar. The measurement  
15 period actually available for each probe was used for these comparisons. These results  
16 show some differences between the values recorded by the two probes of the same  
17 plant; in general, the probes facing south recorded higher values. There was also  
18 variability noted between plants of the same cultivar likely due to factors such as  
19 differences in trunk diameter and actual ground area corresponding to each plant.  
20 Because of the growing pattern of vines that makes almost impossible to adequately  
21 distinguish single crop canopies, the same ground area was assigned to each vine. For  
22 later analyses, the values of each plant were averaged to get a single data set for each  
23 cultivar. In the case of 'Autumn Royal', only two plants were averaged from 20 June to

1 21 August 2009. Because of electronic failure of the sap flow equipment, transpiration  
2 values for 'Autumn Royal' since 22 August to the end of the measurement period were  
3 lost.

4 There was a good agreement between our experimental results (Crimson  
5 transpiration) and the Red Globe evapotranspiration values obtained at a neighbor  
6 vineyard (within the same commercial farm) by Moratíel and Martínez-Cob (2012).  
7 Figure 5 shows the seasonal evolution of the daily values of both variables. There was a  
8 general agreement particularly during summer when soil evaporation was minimized by  
9 the black plastic mulch used in the Red Globe vineyard and there was a little amount of  
10 rain (Figure 1). The difference observed at the beginning of the measurement period  
11 was due to the precipitation occurring on May 2008 increasing soil evaporation. Figure 6  
12 shows that there was a good linear relationship between Crimson transpiration and Red  
13 Globe evapotranspiration (coefficient of determination, 0.73). The simple linear  
14 regression equation depicted on Figure 6 was used to 'adjust' our transpiration values  
15 and then to compute 'adjusted' basal crop coefficients. Table 6 shows the differences  
16 between the experimental and the adjusted  $K_{cb}$  values for the year 2008 when both  
17 Crimson transpiration and Red Globe evapotranspiration were measured. Those  
18 differences were minimal, around  $\pm 3\%$ . These results suggest that our transpiration  
19 values were reliable and can be considered appropriate to obtain accurate basal crop  
20 coefficients for the studied cropping system.

21 Figure 7 shows the evolution of the measured daily table grape transpiration values  
22 and the estimates of  $ET_0$  calculated from the recorded meteorological variables at the  
23 nearby SIAR station. In general terms, the trends of these lines were similar for both

1 years. The highest values of measured transpiration and estimated  $ET_o$  were observed  
2 during mid-summer (July and August) when the evaporative demand was higher due to  
3 the general meteorological conditions (temperature and VPD). During 2009, the  
4 measured transpiration values of both table grape cultivars were quite similar. For the  
5 period from 15 May to 21 August 2009, the average measured transpiration was 4.4  
6  $\text{mm day}^{-1}$  for 'Crimson' and 4.3  $\text{mm day}^{-1}$  for 'Autumn Royal'; transpiration totals for that  
7 period were 426 mm and 439 mm, respectively. Nevertheless, 'Autumn Royal' showed  
8 slightly lower transpiration values than 'Crimson' at the beginning of the measurement  
9 period (Figure 7) due to the later start up of the development stages in 'Autumn Royal'  
10 (Table 3). Later 'Autumn Royal' showed slightly higher transpiration values than  
11 'Crimson' because it reached slightly higher maximum ground cover fraction (Figure 2)  
12 and it also received slightly higher irrigation dose (Table 4). For 'Crimson', the  
13 differences between both seasons, 2008 and 2009, were also small for the period from  
14 15 July to 30 September: averages were 4.0  $\text{mm day}^{-1}$  for 2008 and 3.9  $\text{mm day}^{-1}$  for  
15 2009. Despite the different meteorological conditions in 2008 and 2009, the differences  
16 in transpiration for 'Crimson' between both seasons for the period from 15 July to 30  
17 September were practically negligible because the main differences among  
18 meteorological conditions were observed during May and June (Figure 1). The  
19 maximum weekly averages of the measured transpiration values were 4.7  $\text{mm day}^{-1}$  (in  
20 2008) and 4.8  $\text{mm day}^{-1}$  (in 2009) for 'Crimson', and 5.3  $\text{mm day}^{-1}$  (in 2009) for 'Autumn  
21 Royal'.

22 The transpiration values measured in this paper are not directly comparable to  
23 those reported in previous works (Netzer et al. 2009; Williams and Ayars, 2005)

1 because the variables are different (transpiration and evapotranspiration). In addition,  
2 average values for 'Crimson' in 2008 and 'Autumn Royal' in 2009 cannot be adequately  
3 compared with averages reported in those works for measurements periods being much  
4 longer than ours. Nevertheless, note that most transpiration measurements in this work  
5 were done for a ground cover fraction above 80%. Soil evaporation occurs mostly at the  
6 wetted and sun exposed fraction of the soil surface (Allen et al. 1998), the air ventilation  
7 was highly reduced due to the netting, and precipitation was low, therefore, reduced soil  
8 evaporation should be expected. The seasonal average transpiration recorded for  
9 'Crimson' (2009 season, May to September) in this study was  $4.0 \text{ mm day}^{-1}$ ; discarding  
10 the netting effect, an average value of  $6.0 \text{ mm day}^{-1}$  would have been obtained, quite  
11 close to the average evapotranspiration values reported by Netzer et al. (2009) and  
12 Williams and Ayers (2005). These authors studied the water use of table grape  
13 vineyards under semiarid climate and similar canopy architecture, with high ground  
14 cover fraction above 80 %.

15

16 Basal crop coefficient

17 The weekly averages of  $K_{cb\_exp}$  obtained in this paper for 'Crimson' (seasons 2008  
18 and 2009) and 'Autumn Royal' (season 2009) for the mid-season stage are presented  
19 as a function of the fraction of cumulative thermal units (FTU), i.e. the ratio of  
20 cumulative TU at a given week to the total cumulative TU at harvest (Figure 8). In  
21 general, the values of  $K_{cb\_exp}$  for 'Crimson' were similar for both seasons; during the  
22 period from 15 July to 30 September,  $K_{cb\_exp}$  ranged from 0.55 to 0.82 for 2008 and from  
23 0.54 to 0.87 for 2009 while the average  $K_{cb\_exp}$  was 0.65 for both seasons. Likewise,

1 values for 'Crimson' and 'Autumn Royal' for 2009 also were similar; during the period  
2 from 15 May to 21 August,  $K_{cb\_exp}$  ranged from 0.54 to 0.67 for 'Crimson' and from 0.47  
3 to 0.75 for 'Autumn Royal', while the respective average  $K_{cb\_exp}$  values were 0.59 and  
4 0.60. In average, considering together the three cultivar-season data sets, these values  
5 showed a gradual increase from about 0.50 at the beginning of the measurement period  
6 to about 0.60 at mid-June when a FTU value of about 0.35 was reached (Figure 8).  
7 From mid-June to mid-August, values of  $K_{cb\_exp}$  were fairly stable, around 0.60. Later,  
8 an additional increase of the  $K_{cb\_exp}$  values was observed up to the end of the  
9 measurement period, reaching values of about 0.90. This later increase of  $K_{cb\_exp}$  was  
10 only observed for 'Crimson' as no data was available for 'Autumn Royal' after mid-  
11 August.

12 This later increase of  $K_{cb\_exp}$  after mid-August does not mean that 'Crimson'  
13 transpiration increased as it can be seen on Figure 8. The lower atmospheric  
14 evaporative demand after mid-August led to a decrease of both transpiration and  $ET_o$ .  
15 However, the decrease of transpiration was slower than that of  $ET_o$  leading to that  
16 increase of  $K_{cb\_exp}$ . This behavior was likely due to several factors. When  $ET_o$  is low, a  
17 small energy supply, for instance from canopy or soil, may enable an increase in the  
18 crop coefficient (Testi et al. 2006). The summer pruning in mid-August increased the  
19 amount of leaf area exposed to direct sunlight and allowed a better air circulation within  
20 the canopy. Williams and Ayars (2005) reported that leaf area exposed to direct sunlight  
21 determines more the water use of a grapevine than the total amount of leaf per vine.  
22 Finally, the intense metabolic activity occurring after veraison may have contributed to

1 make the transpiration decrease slower as compared to that of  $ET_0$  after that  
2 phenological stage.

3 Williams and Ayars (2005) showed a relatively similar pattern for the crop coefficient  
4 ( $K_c$ ) curve of 'Thompson Seedless' table grape under semiarid climate, i.e. a gradual  
5 increase and a plateau from end-June to end-August. However, they did not show a  
6 later increase of the  $K_c$  curve as no data was presented after that date. Williams and  
7 Ayars (2005) published an average plateau  $K_c$  value of about 0.90 for a ground cover  
8 fraction of 80% although this average  $K_c$  value increased up to about 1.25 for the short  
9 period when the authors raised the canopy curtain to increase shaded area. Also for  
10 semiarid climates, Netzer et al. (2009) showed  $K_c$  values continuously increasing up to  
11 values of about 1.30 for 'Superior Seedless' table grape due to a concomitant increase  
12 of leaf area index even after harvest (which occurred about 1.5-2.0 months before than  
13 harvest date observed in this paper). The  $K_c$  values of Netzer et al. (2009) showed even  
14 a slightly increase when the leaf area index had already started to decline. The  $K_c$   
15 values of those two works can not directly be compared to the  $K_{cb\_exp}$  values obtained  
16 here as they represent two different variables: evapotranspiration and transpiration,  
17 respectively. Nevertheless, the soil evaporation term of evapotranspiration should be  
18 small for table grapes with ground cover fractions reaching values of 80% and above.  
19 Discarding the reduction coefficient due to the netting, the seasonal average  $K_{cb\_exp}$   
20 obtained in this work would have been relatively close to those reported by Netzer et al.  
21 (2009) and Williams and Ayars (2005).

22 On the other hand, Allen and Pereira (2009) listed tabulated mid-season values of  
23  $K_{cb} = 1.05$  for table grapes for a ground cover fraction above 70%. The average

1 windspeed and minimum relative humidity recorded during the mid-season at the SIAR  
2 station were used to correct the tabulated  $K_{cb}$  following Allen et al. (1998) and Allen and  
3 Pereira (2009). After multiplying by  $K_{ne} = 0.67$ , the  $K_{cb}$  values for this cropping system  
4 (mid-season) estimated using FAO procedure were about to 0.73 to 0.76 slightly higher  
5 than the  $K_{cb\_exp}$  measured during the mid-season in this work. Allen and Pereira (2009)  
6 did not provide any further information (trellis system, distance between vines,  
7 climatological conditions) that could help to explain such a difference. Rana et al. (2004)  
8 reported a crop coefficient reduction of only 14% for table grape 'Italia' under thin plastic  
9 netting. This netting was different to that of this study and this could be the reason for  
10 this lower reduction effect of the netting.

11 The coefficient of determination ( $R^2$ ) of the polynomial fit to the measured  $K_{cb\_exp}$   
12 values was relatively high (about 69%) indicating that a relatively great proportion of the  
13 variability observed for  $K_{cb\_exp}$  was explained by FTU (Figure 8). This value of  $R^2$  was  
14 slightly lower than those reported in previous works where curves of crop coefficient  
15 versus TU or FTU were obtained (Steele et al. 1996; Martínez-Cob 2008). It should be  
16 expected that FTU can not completely explain the variability of  $K_{cb}$  as crop development  
17 is highly but not completely affected by thermal units; other climatic, plant, soil and  
18 management factors should be considered to estimate crop coefficient curves. Other  
19 variables, such as ground cover fraction and leaf area index have also shown to be  
20 appropriate to develop crop coefficient curves (Allen and Pereira 2009; Netzer et al.  
21 2009; Williams and Ayars 2005, among others). These variables are easy to measure  
22 by scientific groups and to describe quite well crop development. But these variables  
23 are not readily available for farmers for routinely use in irrigation scheduling. Variables



1 such as thermal units are more suitable for the purpose of routinely estimation of basal  
2 crop coefficients by farmers because it can be easily obtained from the air temperature  
3 records of standard weather station networks. The use of FTU is preferred over the use  
4 of TU as it allows a general application of the crop coefficient curve across cultivars  
5 requiring different TU totals from emergence or budbreak to harvest or physiological  
6 maturity (Amos et al. 1989). The polynomial curve displayed on Figure 8 should be  
7 limited to the late development and mid-season stages. In addition it is only valid for  
8 cropping conditions (particularly netting) similar to those of this study. The reduction in  
9 transpiration and  $K_{cb}$  due to the netting would require further studies to determine more  
10 appropriate reduction coefficients. Likewise, this equation should be still validated for  
11 other cultivars requiring different cumulative thermal units from budbreak to harvest.

12

### 13 **Conclusions**

14 Similar transpiration and basal crop coefficients ( $K_{cb\_exp}$ ) were measured in this  
15 paper for both studied cultivars, Crimson for two seasons (2008 and 2009) and Autumn  
16 Royal for one (2009). Most of the differences in meteorological conditions in both years  
17 were observed from May to June, and as most of the measurements were carried from  
18 July to September, only slight differences were observed between the transpiration  
19 rates of both cultivars. For the corresponding shared measurement periods, average  
20 transpiration values for 'Crimson' and 'Autumn Royal' for 2009 were 4.4 and 4.3 mm  
21  $day^{-1}$ , respectively, while average transpiration values for 'Crimson' for 2008 and 2009  
22 were 4.0 and 3.9 mm  $day^{-1}$ , respectively. Likewise, for the corresponding shared  
23 measurement periods, values of  $K_{cb\_exp}$  for 'Crimson' and 'Autumn Royal' ranged from

1 0.54 to 0.67 (average 0.59) and from 0.47 to 0.75 (average 0.60), while values of  $K_{cb\_exp}$   
2 for 'Crimson' for 2008 and 2009 ranged from 0.55 to 0.82 (average 0.65) and from 0.54  
3 to 0.87 (average 0.65), respectively. The shorter development length and the slightly  
4 higher ground cover fraction of 'Autumn Royal' would explain the small differences  
5 among these two cultivars. Additionally, these results point out that the presence of  
6 netting system has reduced the transpiration rates. Further research would be required  
7 to obtain more accurate reduction coefficients due to netting.

8 A polynomial equation was fit to the measured basal crop coefficients as a function  
9 of fraction of thermal units. This equation could help farmers to easily estimate the table  
10 grape basal coefficient under the netting. However this equation should be limited to the  
11 late development and mid-season stages and similar conditions of this study. This  
12 equation still needs validation for other cultivars with different cumulative thermal  
13 requirements from budbreak to harvest.

14

## 15 **Acknowledgments**

16 Work funded by the project Consolider CSD2006 – 00067 (Ministerio de Ciencia  
17 e Innovación, Spain). Thanks are due to the owner and manager of the commercial  
18 table grape orchard, to J. Negueroles, J.M. Faci, O. Blanco, M. Izquierdo, J. Gaudó, D.  
19 Mayoral, J.M. Acín, P. Paniagua, E. Medina, and C. Merino for technical and field  
20 assistance, and to the manuscript reviewers for their useful comments.

21

## 22 **References**

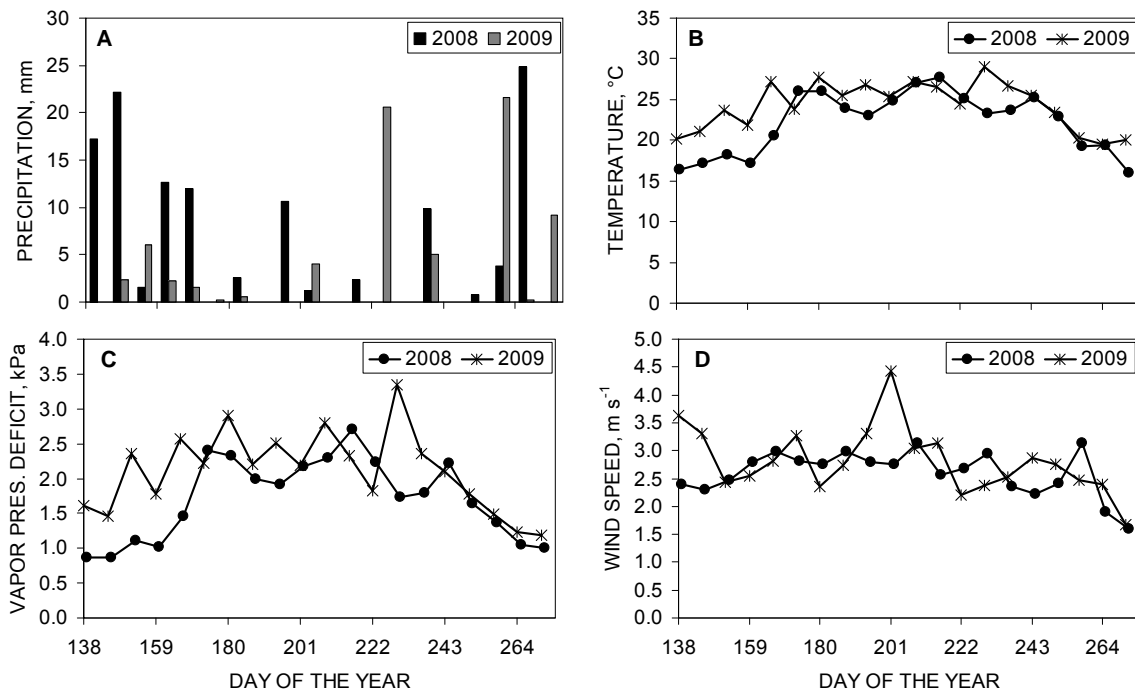
- 1 Allen RG, Pereira LS, Raes D, Smith M (1998) Crop Evapotranspiration: Guidelines for  
2 Computing Crop Water Requirements, FAO Irrigation and Drainage Paper No. 56.  
3 FAO, Rome.
- 4 Allen RG, Pereira LS (2009) Estimating Crop coefficients from Fraction of Ground Cover  
5 and Height. *Irrig Sci* 28: 17-34.
- 6 Amos B, Stone LR, Bark LD (1989) Fraction of thermal units as the base for  
7 evapotranspiration crop coefficient curve for corn. *Agron J* 81:713–717.
- 8 Anuario de Estadística Agroalimentaria (2008) In: Viñedo (Chapter 20.11.2). Madrid,  
9 Spain. <http://www.mapa.es/es/estadistica/pags/anuario/2008/indice.asp>. (Data  
10 retrieved on March 24, 2010).
- 11 Blanco O, Faci JM, Negueroles J (2010) Response of Table Grape Cultivar ‘Autumn  
12 Royal’ to Regulated Deficit Irrigation Applied in Post-Veraison Period. *Span J Agric  
13 Res* 8 (S2): S76-S85.
- 14 Fernández JE, Green SR, Caspari HW, Díaz-Espejo A, Cuevas MV (2008) The Use of  
15 Sap Flow Measurements for Scheduling Irrigation in Olive, Apple and Asian Pear  
16 Trees and in Grapevines. *Plant Soil* 305: 91-104.
- 17 Fernández J.E., Moreno F. 1999. Water use by the olive tree. *J. Crop Prod.* 2 (2): 101-  
18 162.
- 19 Green S, Clothier B, Jardine B (2003) Theory and Practical Application of Heat Pulse to  
20 Measure Sap Flow. *Agron J* 95 (6): 1371-1379.
- 21 Green SR (2008) Measurement and Modelling the Transpiration of Fruit Trees and  
22 Grapevines for Irrigation Scheduling. *Acta Hort* 792: 321-332.

- 1 Hatton TJ, Catchpole EA, Vertessy RA (1990) Integration of Sapflow Velocity to  
2 Estimate Plant Water Use. *Tree Physiol* 6: 201-209.
- 3 Martínez-Cob A (2008) Use of thermal units to estimate corn crop coefficients under  
4 semiarid climatic conditions. *Irrig Sci* 26:335-345.
- 5 Martínez-Cob A, Faci JM (2010) Evapotranspiration of a Hedge–Pruned Olive Orchard  
6 in a Semiarid Area of NE Spain. *Agric Water Manage* 97: 410-418.
- 7 Möller M, Tanny J, Li Y, Cohen S (2004) Measuring and Predicting Evapotranspiration  
8 in an Insect-Proof Screenhouse. *Agric For Meteorol* 127: 35-51.
- 9 Möller M, Assouline S (2007) Effects of a Shading Screen on Microclimate and Crop  
10 Water Requirements. *Irrig Sci* 25: 171-181.
- 11 Moratiel R, Martínez-Cob A (2012) Evapotranspiration of Grapevine Trained to a Gable  
12 Trellis System Under Netting and Black Plastic Mulching. *Irrig Sci* DOI  
13 10.1007/s00271-011-0275-3.
- 14 Netzer Y, Yao C, Shenker M, Bravdo BA, Schwartz A (2009) Water Use and the  
15 Development of Seasonal Crop Coefficients for Superior Seedless Grapevines  
16 Trained to an Open-Gable Trellis System. *Irrig Sci* 27: 109-120.
- 17 Oliveira M.R.G., Calado A.M., Martins Portas C.A. 1996. Tomato Root Distribution  
18 under Drip Irrigation. *J. Amer. Soc. Hort. Sci.* 121(4): 644–648.
- 19 OIV (2006) International Organisation of Vine and Wine. [http://news.reseau-  
20 concept.net/images/oiv\\_uk/client/Commentaire\\_statistiques\\_annexes\\_2006\\_EN.pdf](http://news.reseau-<br/>20 concept.net/images/oiv_uk/client/Commentaire_statistiques_annexes_2006_EN.pdf).  
21 Data retrieved on 24 March, 2010.

- 1 Patakas A, Noitsakis B, Chouzouri A (2005) Optimization of irrigation water use in  
2 grapevines using the relationship between transpiration and plant water status.  
3 *Agriculture, Ecosystems and Environment* 106: 253-259.
- 4 Pereira AR, Green S, Villa Nova NA (2006) Penman–Monteith Reference  
5 Evapotranspiration Adapted to Estimate Irrigated Tree Transpiration. *Agric Water*  
6 *Manage* 83: 153-161.
- 7 Rana G, Katerji N, Introna M, Hammami A (2004) Microclimate and Plant Water  
8 Relationship of the “Overhead” Table Grape Vineyard Managed with Three Different  
9 Covering Techniques. *Sci Horti* 102: 105-120.
- 10 Rodríguez JC, Grageda J, Watts CJ, Garatuza-Payan J, Castellanos-Villegas A,  
11 Rodríguez-Casas J, Saiz-Hernández J, Olavarrieta V (2010) Water Use by Perennial  
12 Crops in the Lower Sonora Watershed. *J Arid Environ* 74: 603-610.
- 13 Searles P.S., Saravia D.A., Rousseaux M.C. 2009. Root length density and soil water  
14 distribution in drip-irrigated olive orchards in Argentina under arid conditions. *Crop*  
15 *Pasture Sci.* 60 (3): 280-288.
- 16 Soar C.J, Loveys B.R. 2007. The effect of changing patterns in soil-moisture availability  
17 on grapevine root distribution, and viticultural implications for converting full-cover  
18 irrigation into a point-source irrigation system. *Aust. J. Grape Wine Res.* 13 (1): 2-13.
- 19 Soil Survey Staff (1999) *Soil taxonomy. A basic system of soil classification for making*  
20 *and interpreting soil surveys*, 2<sup>nd</sup> ed. USDA-Natural Resources Conservation Service,  
21 Washington, DC. [ftp://ftp-fc.sc.egov.usda.gov/NSSC/](ftp://ftp-fc.sc.egov.usda.gov/NSSC/Soil_Taxonomy/tax.pdf) Soil\_Taxonomy/tax.pdf.

- 1 Soil Survey Staff (2006) Keys to soil taxonomy, 10<sup>th</sup> ed. USDA-NRCS, Washington, DC.  
2 [ftp://ftp-fc.sc.egov.usda.gov/NSSC/Soil\\_Taxonomy/keys/keys.pdf](ftp://ftp-fc.sc.egov.usda.gov/NSSC/Soil_Taxonomy/keys/keys.pdf).
- 3 Steele DD, Sajid AH, Prunty LD (1996) New corn evapotranspiration crop curves for  
4 southeastern North Dakota. Trans ASAE 39(3):931–936.
- 5 Stevens R.M., Douglas T. 1994. Distribution of grapevine roots and salt under drip and  
6 full-ground cover microjet irrigation systems. Irrig. Sci. 15: 147-152.
- 7 Tanny J, Cohen S, Teitel M (2003) Screenhouse Microclimate and Ventilation: an  
8 Experimental Study. Biosyst Eng 84: 331-341.
- 9 Tanny J, Haijun L, Cohen S (2006) Airflow Characteristics, Energy Balance and Eddy  
10 Covariance Measurements in a Banana Screenhouse. Agric For Meteorol 139: 105-  
11 118.
- 12 Tanny J, Dicken U, Cohen S (2010) Vertical variation in turbulence statistics and energy  
13 balance in a banana screenhouse. Biosyst Eng 106 (2): 175–187.
- 14 Testi L, Villalobos FJ, Orgaz F, Fereres E (2006) Water requirements of olive orchards.  
15 I. Simulation of daily evapotranspiration for scenario analysis. Irrig Sci 24:69–76.
- 16 Williams LE, Phene CJ, Grimes DW, Trout TJ (2003) Water Use of Mature Thompson  
17 Seedless Grapevines in California. Irrig Sci 22: 11-18.
- 18 Williams LE, Ayars JE (2005) Grapevine Water Use and the Crop Coefficient are Linear  
19 Functions of Shaded Area Measured Beneath the Canopy. Agric For Meteorol 132:  
20 201-211.

- 1 Williams LE, Baeza P (2007) Relationships among Ambient Temperature and Vapor  
 2 Pressure Deficit and Leaf and Stem Water Potentials of Fully Irrigated, Field-Grown  
 3 Grapevines. American Journal of Enology and Viticulture 58 (2): 173-181.
- 4 Yunusa IAM, Walker RR, Blackmore DH (1997) Characterisation of Water Use by  
 5 Sultana Grapevines (*Vitis Vinifera* L.) on Their Own Roots or on Ramsey Rootstock  
 6 Drip-Irrigated with Water of Different Salinities. Irrig Sci 17: 77-86.
- 7 Yunusa IAM, Walker RR, Lu P (2004) Evapotranspiration components from energy  
 8 balance, sapflow and microlysimetry techniques for an irrigated vineyard in inland  
 9 Australia. Agric For Meteorol 127: 93–107.
- 10 Zhang Y, Kang S, Ward EJ, Ding R, Zhang X, Zheng R (2011) Evapotranspiration  
 11 components determined by sap flow and microlysimetry techniques of a vineyard in  
 12 northwest China: Dynamics and influential factors. Agric Water Manage 98: 1207-  
 13 1214

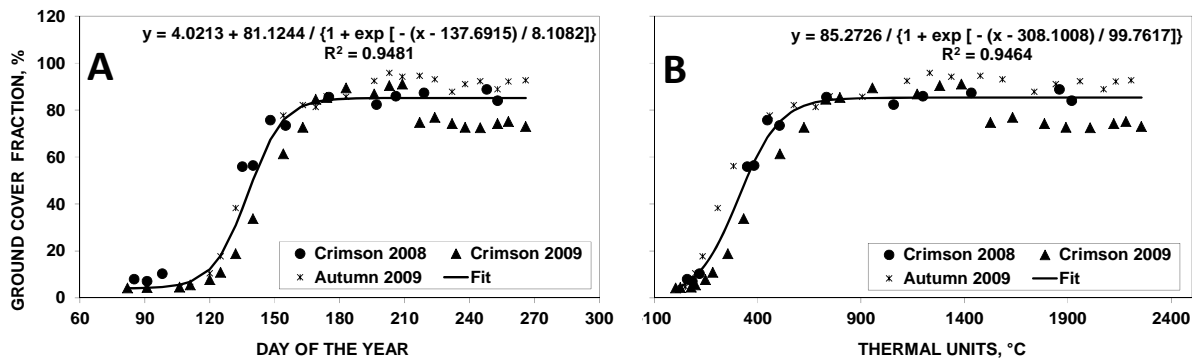


14

1 Figure 1. Weekly meteorological conditions during 2008 and 2009 (15 May to 30  
2 September) recorded at a standard weather station over grass located 1 km from the  
3 vineyard. A, total precipitation; B, mean air temperature; C, mean vapour pressure  
4 deficit; and D, mean wind speed at 2.0 m above ground.

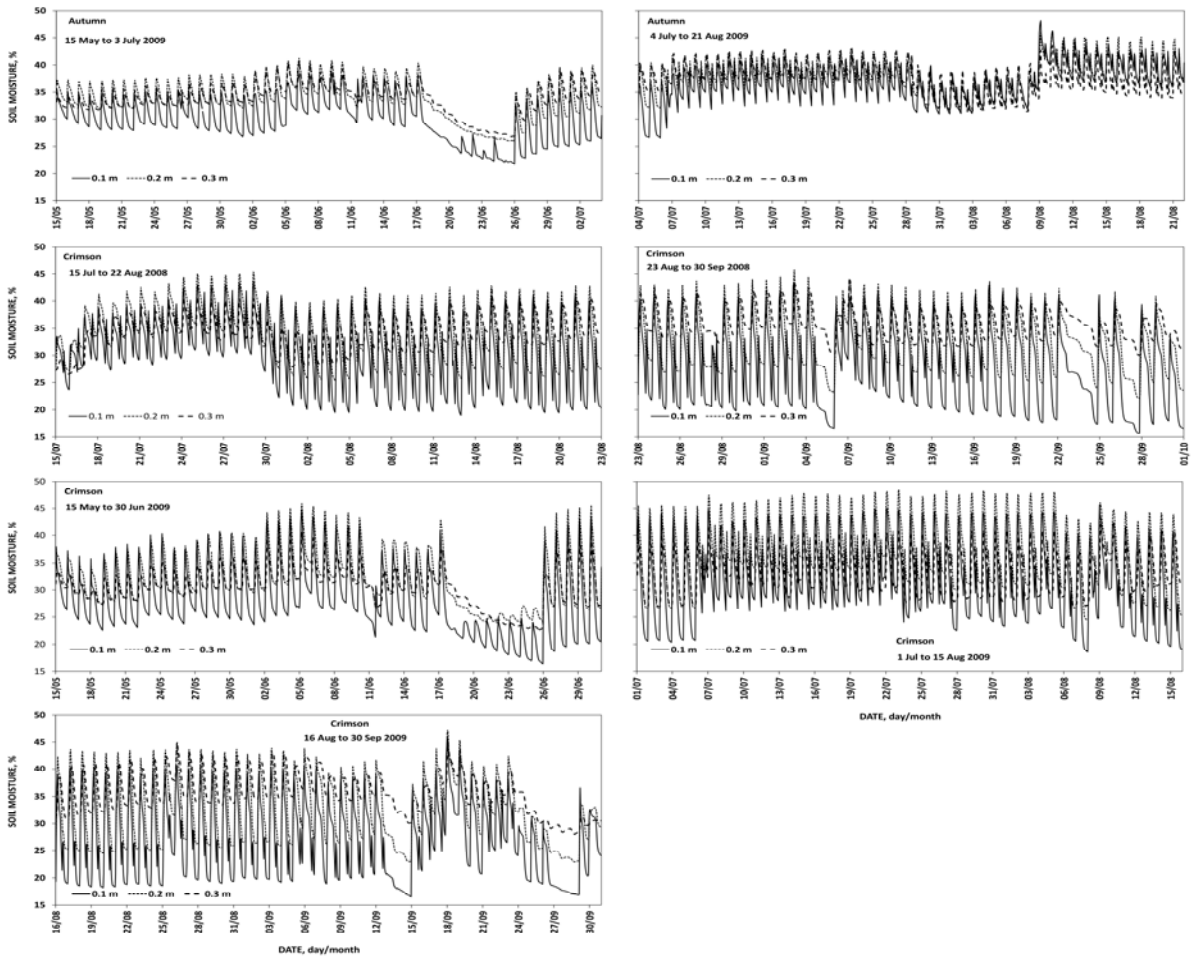
5





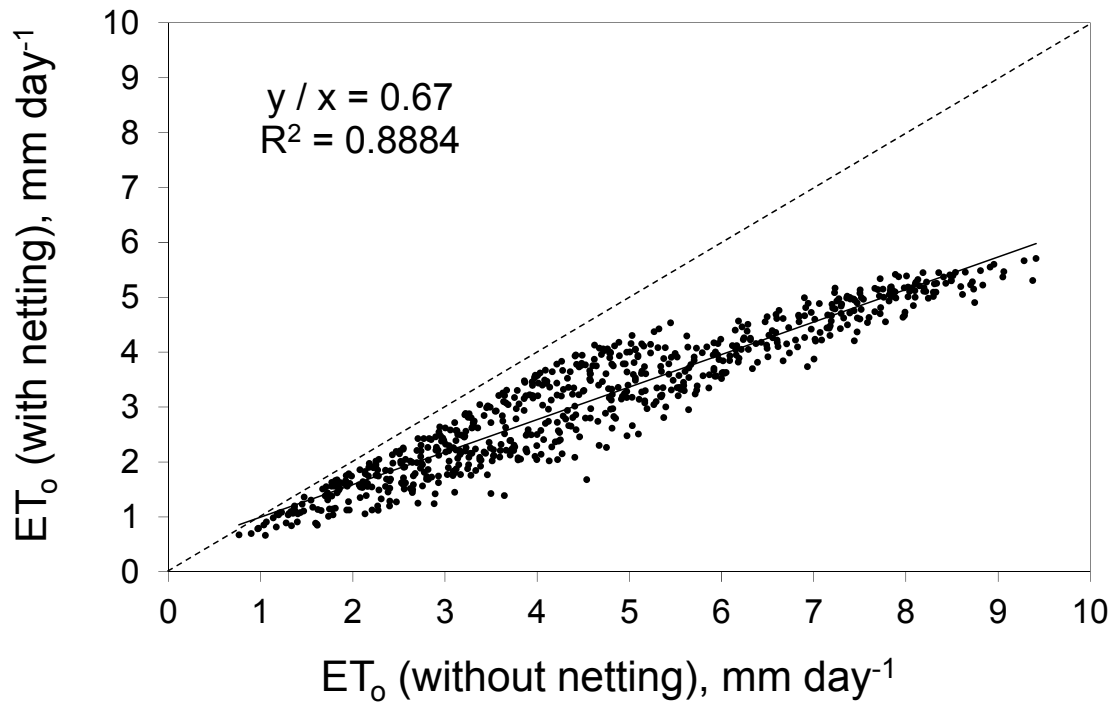
1  
2  
3  
4  
5

Figure 2. Measured values of ground cover fraction (i.e. the fraction of soil shadowed by the crop canopy) for cultivars ‘Crimson’ (seasons 2008 and 2009) and ‘Autumn Royal’ (season 2009), as a function of (A) day of the year and (B) thermal units



1  
 2 Figure 3. Hourly soil water content values recorded at different depths during the  
 3 measurement periods for 2008 (cultivar 'Crimson') and 2009 (cultivars 'Crimson' and  
 4 'Autumn Royal'). Values are the averages of two access tubes installed at 0.5 and 1.25  
 5 m from the central vine.

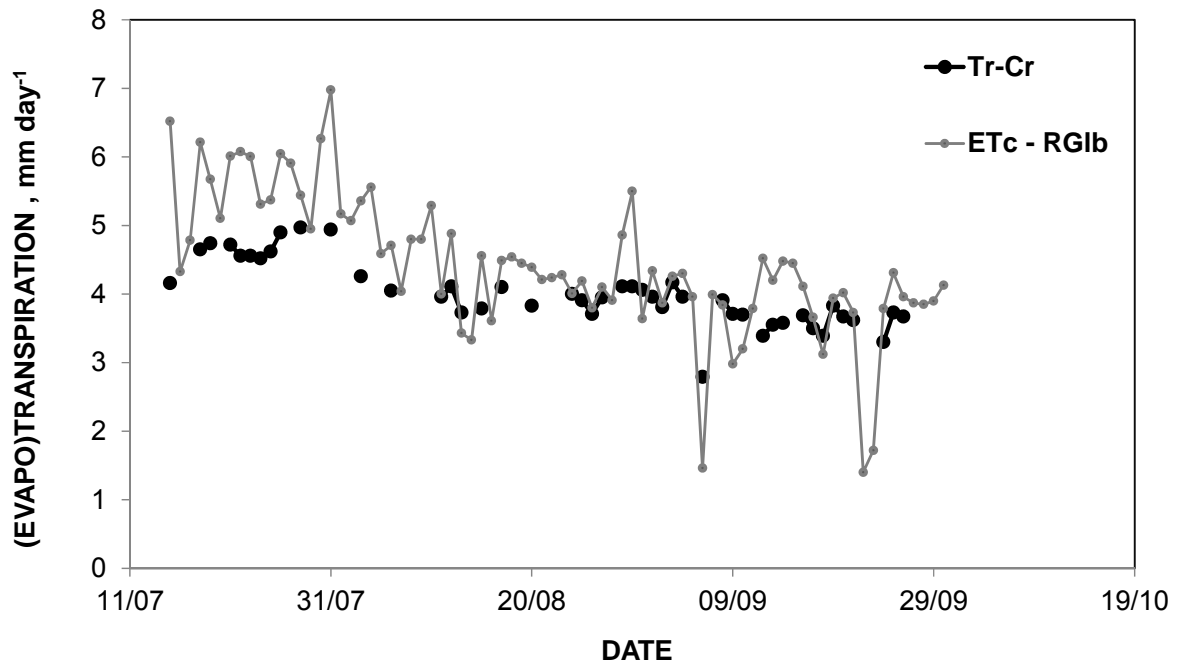
6



1

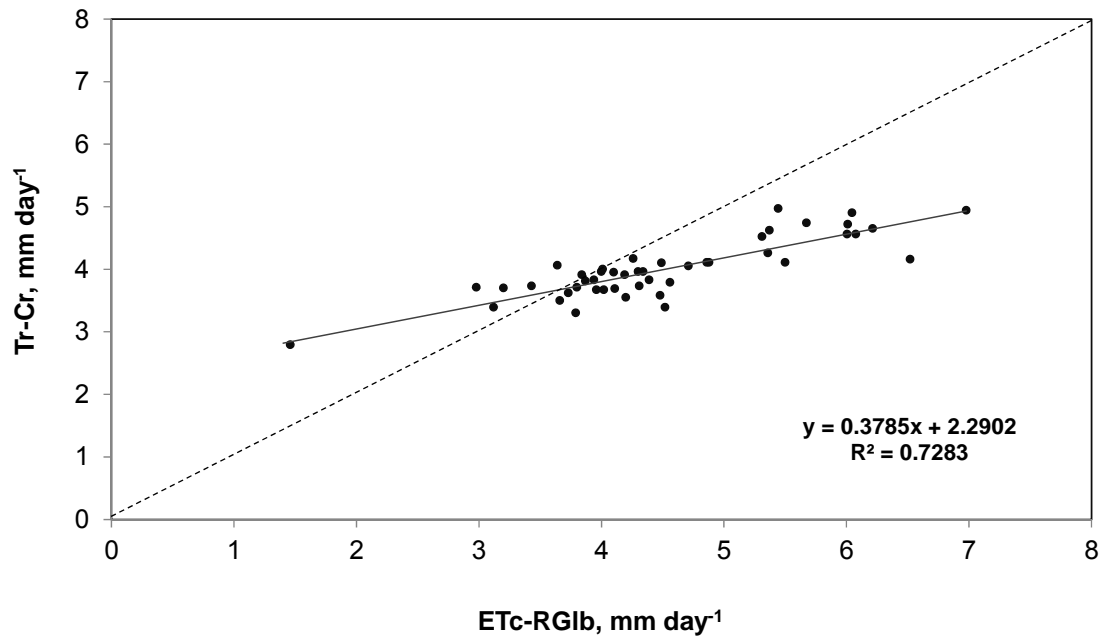
2 Figure 4. Comparison between the reference evapotranspiration ( $ET_0$ ) estimated using  
 3 the meteorological variables recorded at the SIAR station (“ $ET_0$  without netting”) and the  
 4  $ET_0$  estimated by ‘correcting’ those meteorological variables by their corresponding  
 5 ratios to the recorded values at the ‘Crimson’ station (“ $ET_0$  with netting”).

6



1  
2  
3  
4

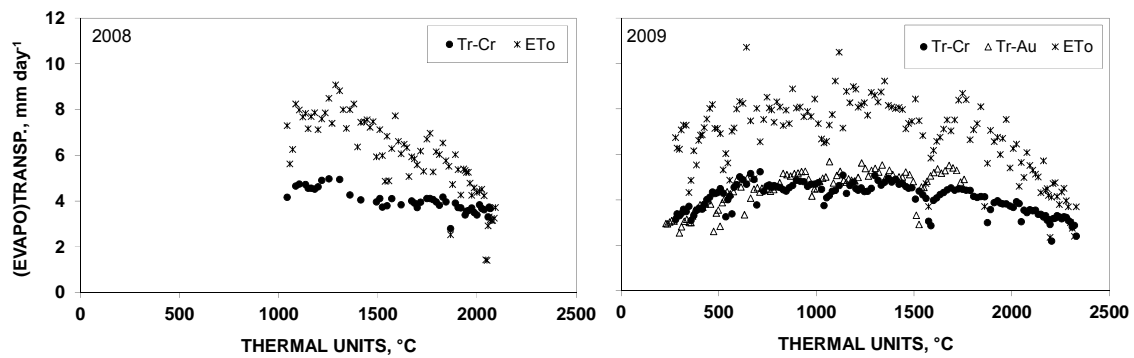
Figure 5. Evolution of Crimson daily transpiration (Tr-Cr) and Red Globe daily evapotranspiration (ETc-RGlb) during 2008 measuring season.



1

2 Figure 6. Analysis of regression between Red Globe daily evapotranspiration (ETc-  
3 RGlB) and Crimson daily transpiration (Tr-Cr) values for 2008 measuring season.

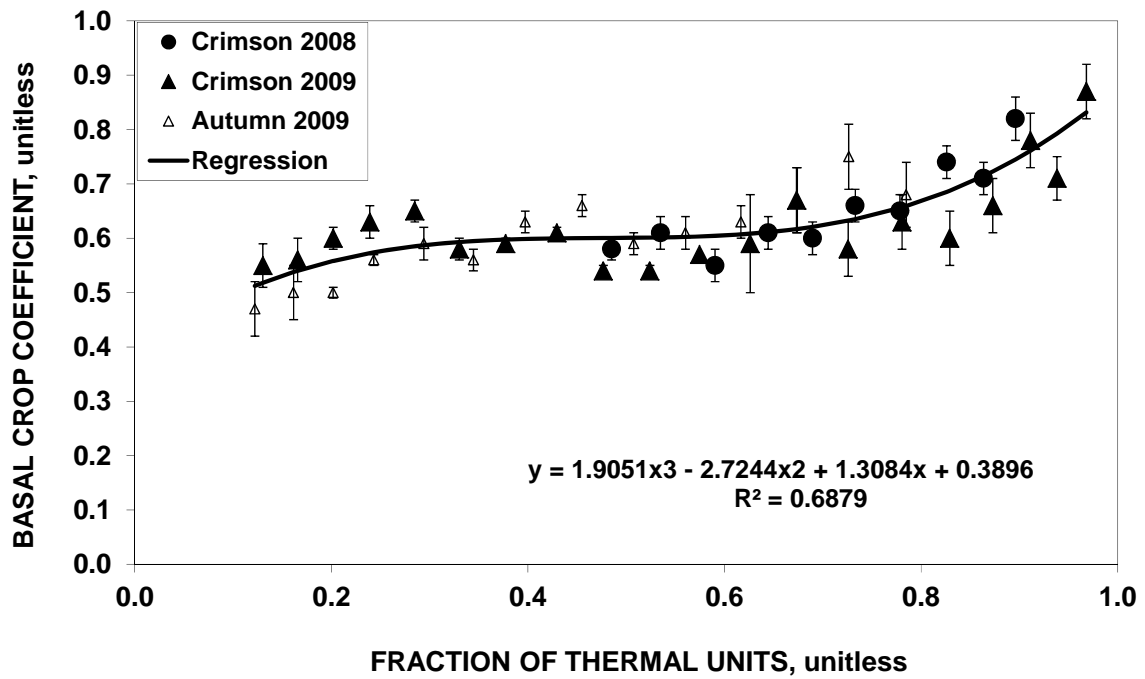
4



1

2 Figure 7. Daily values of measured table grape transpiration under the netting for  
 3 cultivars 'Crimson' (Tr-Cr) (seasons 2008 and 2009) and 'Autumn Royal' (Tr-Au)  
 4 (season 2009) and estimated reference evapotranspiration (ET<sub>0</sub>) as a function of  
 5 cumulative thermal units.

6



1  
 2 Figure 8. Weekly averages of measured basal table grape coefficient under the netting  
 3 for cultivars 'Crimson' (seasons 2008 and 2009) and 'Autumn Royal' (season 2009) as a  
 4 function of fraction of thermal units.  
 5

1 Table 1. Physical and chemical properties of the soils in the studied vineyards. STC,  
 2 USDA soil texture classification; GE, percentage of particles above 2 mm; SBD, soil  
 3 bulk density; FC, field capacity; WP, wilting point; SAT, saturation water content; MO,  
 4 organic matter; ECe, electrical conductivity.

5

Cultivar	Depth (m)	STC	GE %	SBD Kg m <sup>-3</sup>	FC % <sup>a</sup>	WP % <sup>a</sup>	SAT % <sup>a</sup>	MO %	ECe dS m <sup>-1</sup>
Crimson	0.00 - 0.10	Sandy loam	3	1441.3	37.5	14.4	53.3	2.30	4.06
	0.11 - 0.39	Sandy	10	1565.8	26.6	7.8	48.5	0.21	4.86
	0.40 - 0.70	Sandy	1	1522.7	7.6	< 1.0	45.7	< 0.01	2.54
Autumn	0.00 - 0.26	Sandy loam	10	1468.7	39.7	13.2	54.3	2.24	2.94
	0.27 - 0.76	Sandy loam	10	1564.7	39.1	11.0	53.2	0.70	1.83

6 <sup>a</sup> Expressed as volumetric water content

7

8



1 Table 2. Volume fractions of wood ( $F_M$ ) and water ( $F_L$ ) (averages and standard  
 2 deviations), and radius at the cambium, determined for each cultivar, vine and year.

	Fraction	Year	Vine 1	Vine 2	Vine 3
Crimson	$F_M$	2008		$0.274 \pm 0.016$	$0.276 \pm 0.032$
		2009	$0.305 \pm 0.017$	$0.301 \pm 0.022$	$0.293 \pm 0.013$
	$F_L$	2008		$0.461 \pm 0.127$	$0.467 \pm 0.050$
		2009	$0.516 \pm 0.039$	$0.521 \pm 0.031$	$0.539 \pm 0.030$
	Radius (cm)	2008		3.58	3.55
		2009	3.06	3.70	3.43
Autumn Royal	$F_M$	2009	$0.332 \pm 0.026$	$0.336 \pm 0.028$	$0.338 \pm 0.009$
	$F_L$	2009	$0.527 \pm 0.047$	$0.501 \pm 0.045$	$0.514 \pm 0.022$
	Radius (cm)	2009	2.66	2.68	3.46

3

4

1 Table 3. Phenological stages of the studied cultivars during 2008 and 2009. Values  
 2 between brackets represent cumulative thermal units since (°C) budbreak.

Cultivar	Year	Budbreak	Flowering	Veraison	Harvest
Crimson	2008	5 March (0)	20 May (382)	7 August (1433)	20 October (2245)
	2009	23 March (0)	20 May (333)	22 July (1281)	5 October (2381)
Autumn Royal	2009	8 April (0)	28 May (377)	15 July (1123)	16 September (2140)

3

4

5

1 Table 4. Monthly irrigation amounts (mm) applied from 15 May to 30 September for  
2 each cultivar and season.

Cultivar	Year	May	Jun	Jul	Aug	Sep	Total
Crimson	2008	20.7	85.0	145.5	122.8	71.7	445.7
	2009	44.6	117.5	181.2	126.1	63.1	532.5
Autumn Royal	2009	50.5	134.4	192.2	122.9	80.8	580.8

3

4

- 1 Table 5. Statistics parameters for the comparison of the transpiration measurements  
 2 within the same plant and between different plants of the same cultivar.

Parameter	Crimson 2008 <sup>(a)</sup>		Crimson 2009 <sup>(b)</sup>			Autumn 2009 <sup>(d)</sup>		
	Vine 1	Vine 2	Vine 1	Vine 2	Vine 3	Vine 1	Vine 2	Vine 3
Mean	4.1	3.9	3.2	5.1	3.8	3.7	3.4	3.6
Median	3.9	4.0	3.1	5.3	3.9	3.6	3.4	3.5
CV	14.8	8.3	17.2	18.8	15.1	16.7	15.6	23.0
Percentile 25	3.6	3.7	2.8	4.3	3.3	3.2	3.0	2.9
Percentile 75	4.2	4.1	3.6	5.9	4.3	4.0	3.8	4.0

Parameter	Crimson 2009 <sup>(b)</sup>						Autumn 2009					
	Vine 1 <sup>(*)</sup>		Vine 2 <sup>(*)</sup>		Vine 3 <sup>(*)</sup>		Vine 1 <sup>(*)</sup>		Vine 2 <sup>(*)</sup>		Vine 3 <sup>(*)</sup>	
	N	S	N	S	N	S	N <sup>(c)</sup>	S <sup>(c)</sup>	N <sup>(d)</sup>	S	N <sup>(c)</sup>	S
Mean	2.5	3.8	4.8	5.4	3.8	3.8	4.2	3.5	2.5	4.3	5.6	-
Median	2.6	3.7	5.0	5.6	3.8	4.0	4.2	3.6	2.4	4.3	5.7	-
CV	18.2	21.7	20.3	18.4	36.2	16.1	46.9	47.0	43.5	44.0	30.9	-
Percentile 25	2.1	3.1	3.9	4.7	3.4	3.3	3.9	3.2	2.2	3.7	4.4	-
Percentile 75	2.9	4.5	5.7	6.1	4.3	4.3	4.6	3.8	2.6	4.9	6.6	-

<sup>(a)</sup> 15 Jul to 30 Sep 2008; <sup>(b)</sup> 15 May to 30 Sep 2009; <sup>(c)</sup> 15 May to 21 Aug 2009; <sup>(d)</sup> 15 May to 19 Jun 2009

<sup>(\*)</sup> Symbols N and S are used to distinguish measurements taken at north and south side of the same plant.

- 3  
 4  
 5

1 Table 6. Weekly averages of basal crop coefficients for Crimson during 2008: a)  
 2 experimental values ( $K_{cb\_exp}$ ); and b) adjusted using the linear regression in Figure 6  
 3 ( $K_{cb\_adj}$ ). DOY, middle day of the year for each week.

DOY	$K_{cb\_adj}$	$K_{cb\_exp}$	Difference
200	0.59	0.58	0.01
207	0.58	0.61	-0.03
214	0.55	0.55	0.00
221	0.59	0.61	-0.02
228	0.60	0.60	0.00
235	0.65	0.66	-0.01
242	0.64	0.65	-0.01
249	0.73	0.74	-0.01
256	0.74	0.71	0.03
263	0.85	0.82	0.03

4

5

6