

#innovacion
#financiacion
#asesoramiento
#internacionalizacion

JTI de Bioindustrias y PRIMA

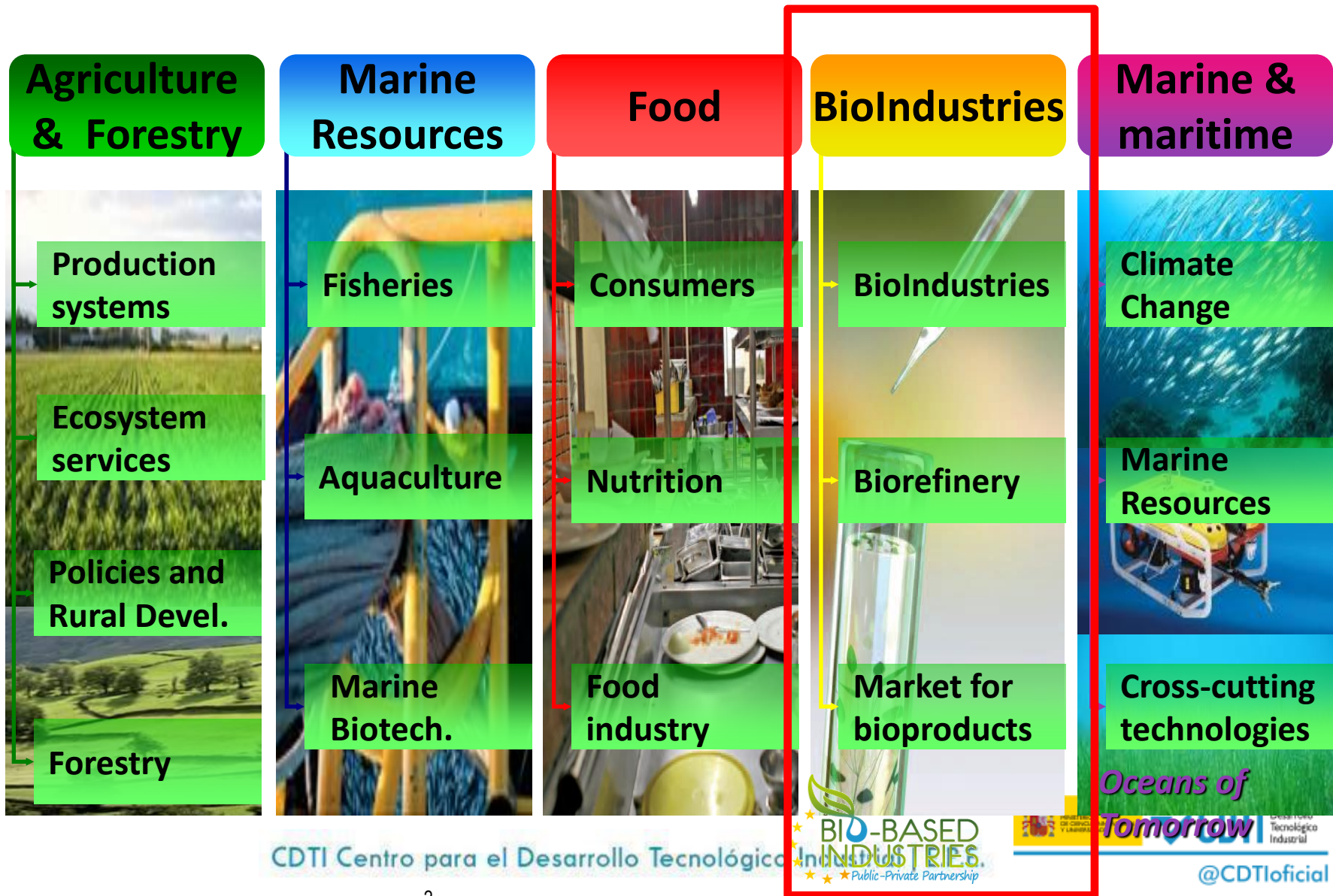
Zaragoza, 24 de Octubre de 2019



Marta Conde
Punto Nacional de Contacto Reto Social 2,
Biotechnología y PRIMA

Dirección de Programas Europeos y Cooperación
Territorial
CDTI E.P.E.

marta.conde@cdti.es



What is the Bio-based Industries Initiative?

http://www.youtube.com/watch?v=kym3mIYo_30

- A Public-Private Partnership between the **Bio-based Industries Consortium** and the **EU**
- A **joint** commitment of 3.7 billion € over 2014-2020
- Annual Work Plan 2020. **Under discussion**



+ Biobased Industries Consortium =



<http://biconsortium.eu>

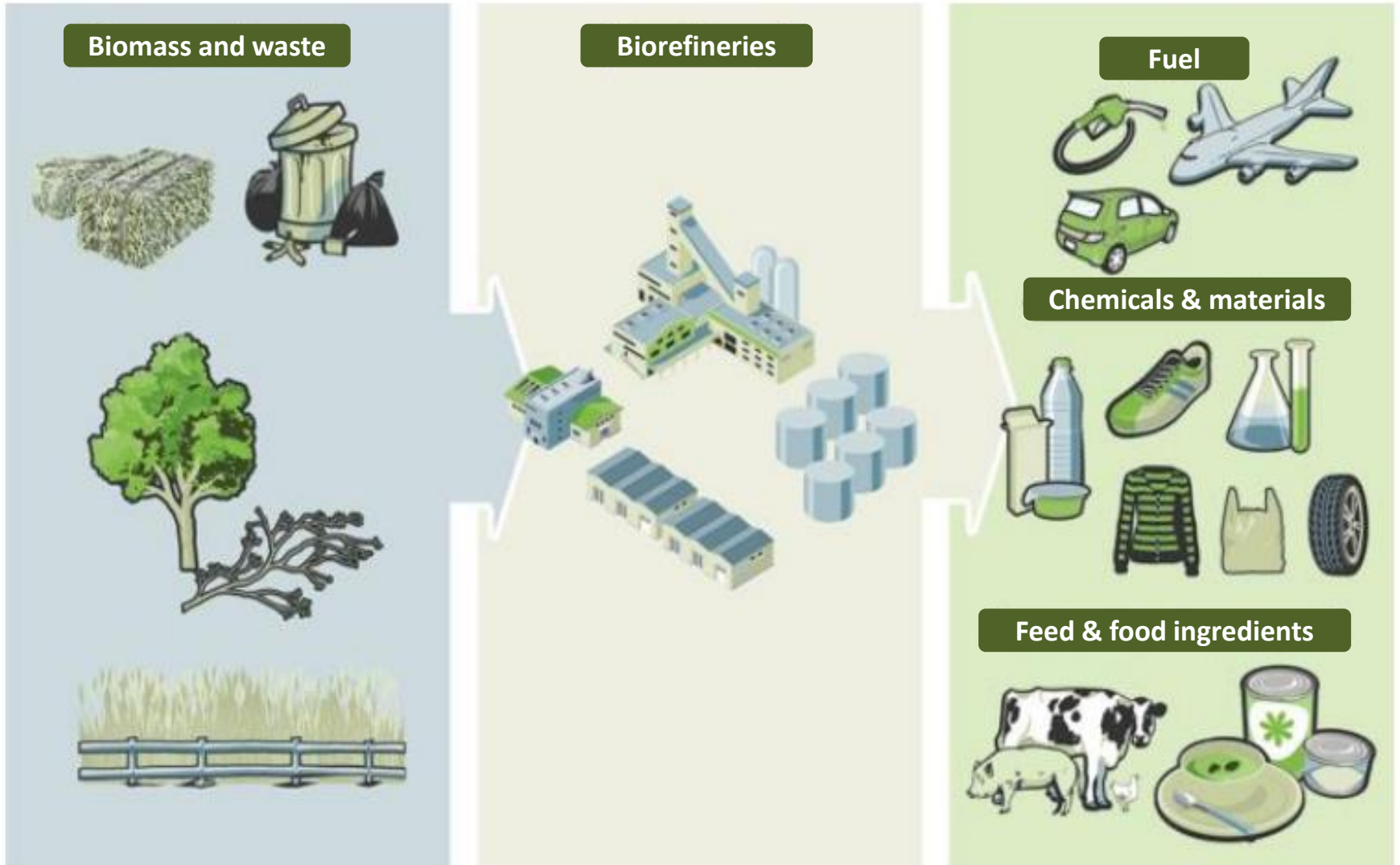
<http://www.bbi-europe.eu>

CDTI Centro para el Desarrollo Tecnológico Industrial | E.P.E.



@CDTIoficial

JTI BBI. From feedstock to bio-based products



4 Strategic orientations of the bio-based industry focused on the steps of a value chain



SO1 Biomass feedstock

- **Agri-based**
- **Forest**
- **Aquatic**
- **Biowaste and CO2**

BIC Membership - A fruitful investment

	BIC Members /Associated Member	Votes	Annual Fee (Euros/year)
BIC	Industry	6	30.000
BIC	SME	1	5.000
BIC	Cluster (representing SMEs)	1	5.000
AM	Associated Member		1.000



<http://sbioc.com>

Biobased Industries Consortium

- 92 Full members

<http://biconsortium.eu/membership/full-members>

18 SMEs Clusters (122 SMEs)

<http://biconsortium.eu/membership/full-members/smes-clusters>

- Associate Members

<http://biconsortium.eu/membership/associate-members>



ustrial | E.P.E.



JTI BBI. Type of actions.

- **RESEARCH & INNOVATION ACTIONS:**

Up to TRL 5.

Budget: **2-5 M€**

30,00%

- **INNOVATION ACTIONS. DEMONSTRATION PROJECTS:**

TRL 6-7.

Budget: **7-10 M€ + Additional activities**

30,00%

- **INNOVATION ACTIONS. FLAGSHIP PROJECTS:**

TRL 8.

Budget: **12-35 M€ + Additional activities**

34,75%

- **CSA.**

Budget: **1-1,5 M€**

3,5%

JTI BBI. Type of actions. Funding rates.

Participant	RIA	IA	CSA
Large Industries	0%	70%	0%
SMEs	100%	70%	100%
Non profit, legal entities (Universities, RTOs, NGOs etc.)	100%	100%	100%

Annual Work Plan 2020

Under discussion - Pre-publication end of 2019

- **Available budget: ≈79 M€**
- Call opening: ¿April 2020?.
- Call closure: ¿September 2020?.

Events: BBI JU Stakeholder Forum 2019, Brussels 4 December 2019



CDTI Centro para el Desarrollo Tecnológico Industrial | E.P.E.



PRIMA:

Partnership for Research and Innovation
in the Mediterranean Area

Calls 2020

Who can participate?

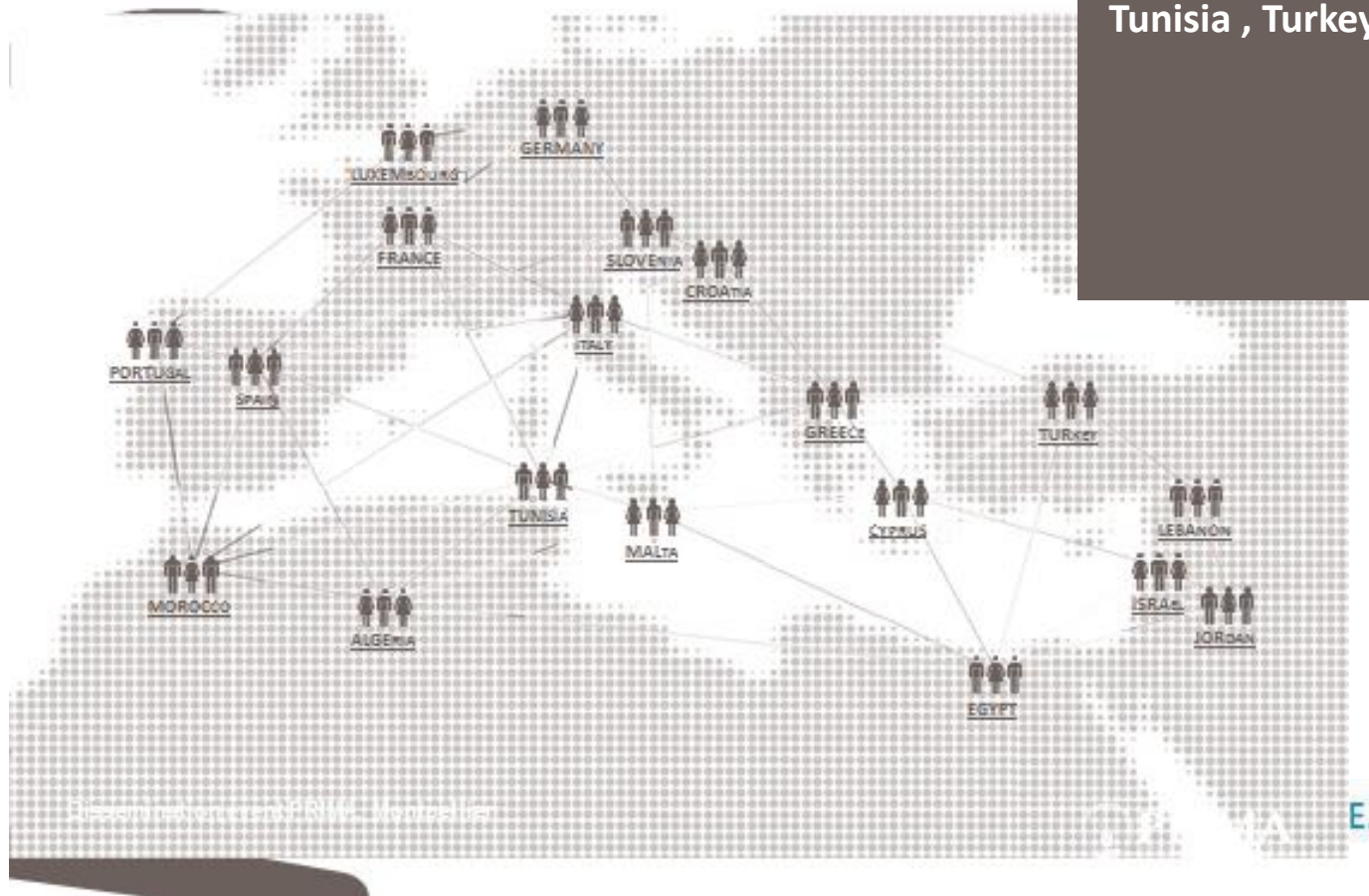
At least 3 countries:

- At least 1 EU country
- And 1 country bordering the Mediterranean Sea

19 countries

11 EU countries: Cyprus, Croatia, France, Germany, Greece, Italy, Luxemburg, Malta, Portugal, Slovenia and Spain

8 Non-EU countries: Algeria, Egypt, Jordan, Israel, Lebanon, Morocco, Tunisia, Turkey



PRIMA Strategic Research and Innovation Agenda



April 2017



MANAGEMENT OF WATER

Integrated and sustainable management of water for arid and semi-arid Mediterranean areas



FARMING SYSTEMS

Sustainable farming systems under Mediterranean environmental constraints

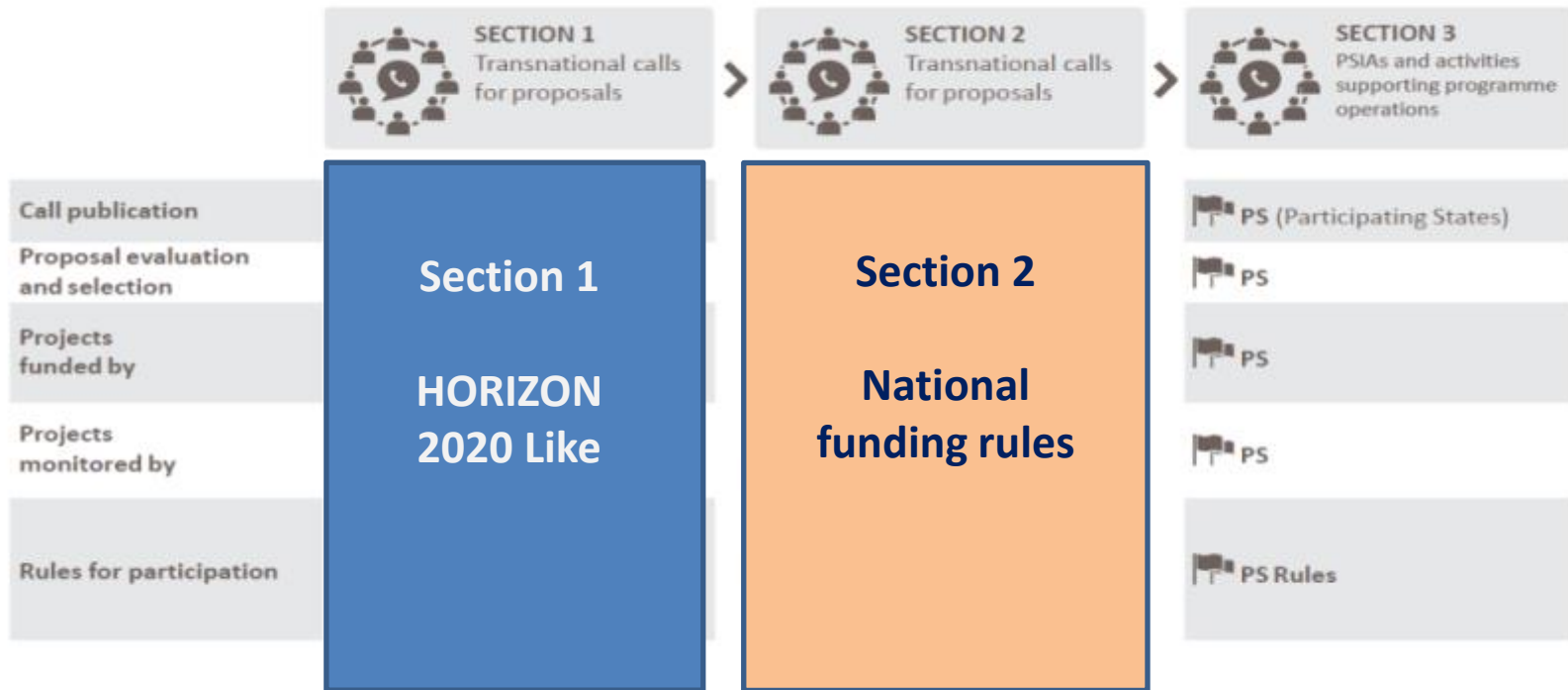


AGRO-FOOD VALUE CHAIN

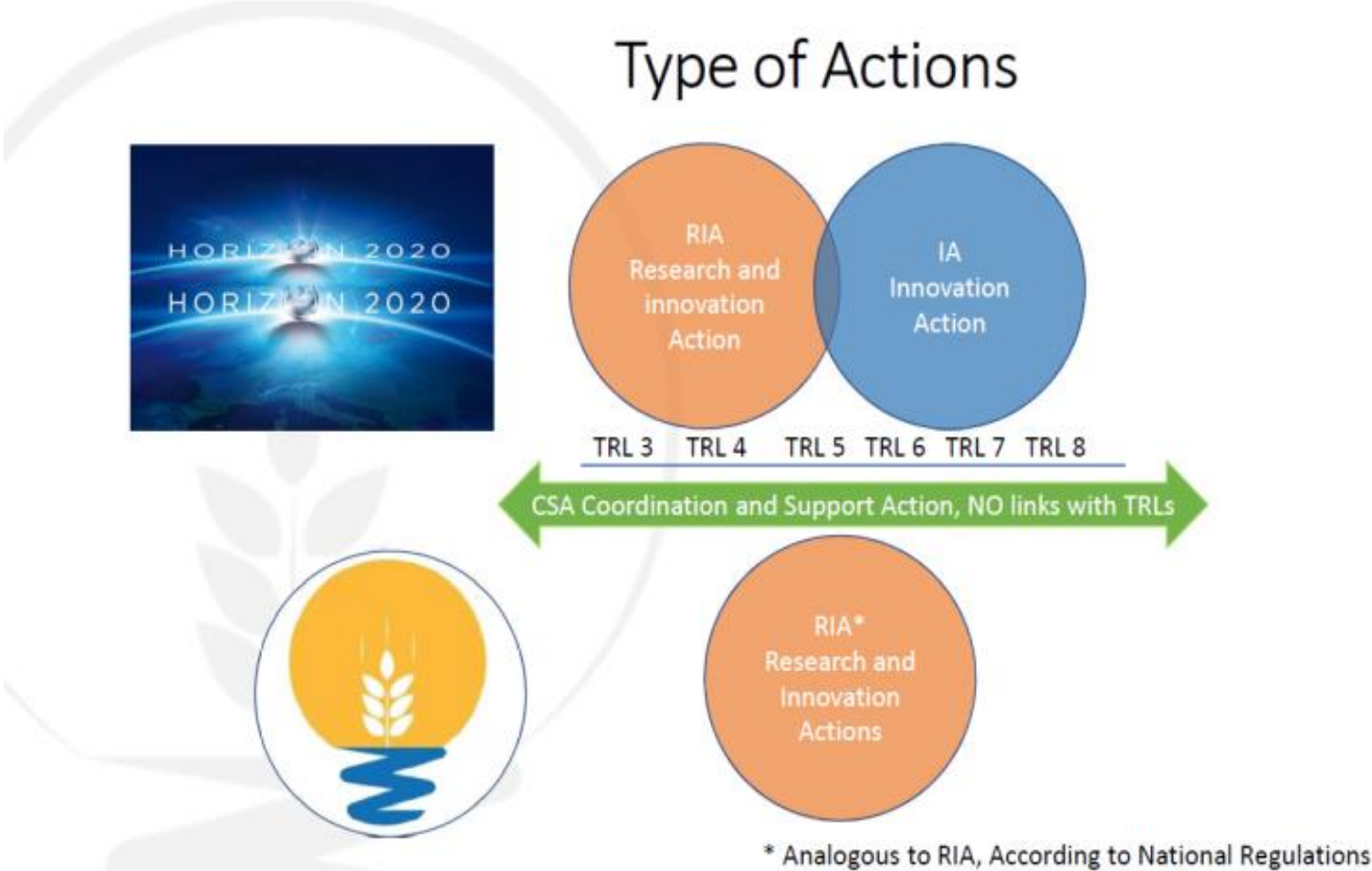
Sustainable Mediterranean agro-food value chain for regional and local development

PRIMA Programme structure

PRIMA programme structure



PRIMA- Type of Actions



Source: PRIMA AWP2019 Infoday, Barcelona 4 December 2018

PRIMA AWP 2020 Infoday

Próximamente en Barcelona

<http://prima-med.org/>



Listas de distribución – inscríbete en www.cdti.es

CDTI Centro para el Desarrollo Tecnológico Industrial

Orientación · Financiación · Internacionalización

english / euskara / català / galego

Texto a buscar

Qué es el CDTI

Ayudas a la I+D+I

Internacionalización de la I+D+I

Servicios

PERSPECTIVA CDTI

innvierte

Ayudas a la I+D+I

Solicitud de proyectos on-line

Internacionalización de la I+D+I

Listas de distribución

Contactos en España

Representante en el Comité de Programa Reto social 2

- ✓ José Manuel González (CDTI)
josemanuel.gonzalez@cdti.es

Puntos Nacionales de Contacto (NCP) Reto Social 2, JTI-BBI y PRIMA

- ✓ Marta Conde (CDTI)
marta.conde@cdti.es
- ✓ Jesús Escudero (INIA)
jesus.escudero@inia.es
- ✓ Marta de Diego (CDTI) – JTI de Bioindustrias
marta.dediego@cdti.es

+ info sobre programas y ayudas
para la
internacionalización de la I+D+I española

www.eshorizonte2020.es - www.cdti.es



@EsHorizonte2020 - @CDTIoficial