



Article

# Holm Oak (*Quercus ilex* subsp. *ballota* (Desf.) Samp.) Bark Aqueous Ammonia Extract for the Control of Invasive Forest Pathogens

Eva Sánchez-Hernández <sup>1</sup>, Joaquín Balduque-Gil <sup>2</sup>, Juan J. Barriuso-Vargas <sup>2</sup>, José Casanova-Gascón <sup>3</sup>, Vicente González-García <sup>4</sup>, José Antonio Cuchí-Oterino <sup>5</sup>, Belén Lorenzo-Vidal <sup>6</sup>, Jesús Martín-Gil <sup>1</sup>, and Pablo Martín-Ramos <sup>1,3,\*</sup>

- <sup>1</sup> Department of Agricultural and Forestry Engineering, ETSIIAA, University of Valladolid, Avenida de Madrid 44, 34004 Palencia, Spain
  - <sup>2</sup> AgriFood Institute of Aragon (IA2), CITA-Universidad de Zaragoza, Avda. Montañana 930, 50059 Zaragoza, Spain
  - <sup>3</sup> Instituto Universitario de Investigación en Ciencias Ambientales de Aragón, EPS, Universidad de Zaragoza, Carretera de Cuarte s/n, 22071 Huesca, Spain
  - <sup>4</sup> Department of Agricultural, Forest and Environmental Systems, Agrifood Research and Technology Centre of Aragón, Instituto Agroalimentario de Aragón—IA2, CITA-Universidad de Zaragoza, Avda. Montañana 930, 50059 Zaragoza, Spain
  - <sup>5</sup> Instituto Universitario de Investigación en Ingeniería de Aragón (I3A), EPS, University of Zaragoza, Carretera de Cuarte s/n, 22071 Huesca, Spain
  - <sup>6</sup> Microbiology Service, Hospital Universitario Río Hortega, Calle Dulzaina 2, 47012 Valladolid, Spain
- \* Correspondence: pmr@uva.es; Tel.: +34-(979)-108362



**Citation:** Sánchez-Hernández, E.; Balduque-Gil, J.; Barriuso-Vargas, J.J.; Casanova-Gascón, J.; González-García, V.; Cuchí-Oterino, J.A.; Lorenzo-Vidal, B.; Martín-Gil, J.; Martín-Ramos, P. Holm Oak (*Quercus ilex* subsp. *ballota* (Desf.) Samp.) Bark Aqueous Ammonia Extract for the Control of Invasive Forest Pathogens. *Int. J. Mol. Sci.* **2022**, *23*, 11882. <https://doi.org/10.3390/ijms231911882>

Academic Editors: Robert Ancuceanu and Cristina Elena Dinu-Pîrvu

Received: 18 September 2022

Accepted: 4 October 2022

Published: 6 October 2022

**Publisher's Note:** MDPI stays neutral with regard to jurisdictional claims in published maps and institutional affiliations.



**Copyright:** © 2022 by the authors. Licensee MDPI, Basel, Switzerland. This article is an open access article distributed under the terms and conditions of the Creative Commons Attribution (CC BY) license (<https://creativecommons.org/licenses/by/4.0/>).

**Abstract:** Holm oak (*Quercus ilex* subsp. *ballota* (Desf.) Samp.) bark is a commonly used remedy to treat gastrointestinal disorders, throat and skin infections, hemorrhages, and dysentery. It has also been previously reported that its methanol extracts possess antibacterial activity, which can be related to the richness of *Quercus* spp. extracts in phenolic compounds, such as flavonoids and tannins. However, there is no information on the antifungal (including oomycete) properties of the bark from *Q. ilex* or its subspecies (*ilex* and *ballota*). In this work, we report the characterization of the aqueous ammonia extract of its bark by FTIR and GC-MS and the results of in vitro and ex situ inhibition tests against three phytopathogens. The main phytochemical components identified were inositols (19.5%), *trans*-squalene (13%), 4-butoxy-1-butanol (11.4%), gulopyranose (9.6%), lyxose (6.5%), 2,4-dimethyl-benzo[H]quinoline (5.1%), catechol (4.5%), and methoxyphenols (4.2%). The efficacy of the extract in controlling forest phytopathogens was tested in vitro against *Fusarium circinatum* (responsible for pitch canker of *Pinus* spp.), *Cryphonectria parasitica* (which causes chestnut blight), and *Phytophthora cinnamomi* (which causes 'root and crown rot' in a variety of hosts, including *Castanea*, conifers, *Eucalyptus*, *Fagus*, *Juglans*, *Quercus*, etc.), obtaining EC<sub>90</sub> values of 322, 295, and 75 µg·mL<sup>-1</sup>, respectively, much lower than those attained for a commercial strobilurin fungicide (azoxystrobin). The extract was further tested ex situ against *P. cinnamomi* on artificially inoculated, excised stems of 'Garnem' almond rootstock, attaining complete protection at a dose of 782 µg·mL<sup>-1</sup>. The results suggest that holm oak bark extract may be a promising source of bioactive compounds against invasive forest pathogens, including the oomycete that is causing its decline, the so-called 'seca' in Spain.

**Keywords:** *Cryphonectria parasitica*; chestnut blight; *Fusarium circinatum*; in vitro tests; *Phytophthora cinnamomi*; pitch canker; root rot

## 1. Introduction

From ancient times to the present, the usage of barks has changed and expanded in response to various socioeconomic circumstances as well as scientific and technological

advancements. Barks exhibit a great deal of diversity and are highly rich in chemical components, particularly in extractives such as sterols, terpenes, and numerous other phenolic compounds. These properties make barks useful as adhesives, formaldehyde scavengers, and antioxidants in medicine and pharmacy [1].

*Quercus ilex* L. (and its two subspecies *Quercus ilex* subsp. *ilex* L. and *Quercus ilex* subsp. *ballota* (Desf.) Samp.) is an evergreen tree that usually reaches 15 m in height. It has a broad canopy of ascending branches, and its relatively short trunk can sometimes exceed 2 m in diameter. As one of the most geographically widespread species in Portugal and Spain, *Q. ilex* and its subspecies have traditionally been considered important timber raw materials, apart from the use of acorn production as a staple food in the past. *Q. ilex* subsp. *ballota* is found in a wide variety of soils due to its seedling and root performance, stomatal responses, antioxidant systems, as well as its xylem plasticity, showing better drought resistance than *Q. ilex* subsp. *ilex* L. and deciduous *Q. faginea* Lam. species [2]. However, most studies have dealt with *Q. ilex* subsp. *ilex*, which is morphologically and genetically distinct from *Q. ilex* subsp. *ballota* and distributed differently. Likewise, the chemical components of holm oak bark have not been explored for the obtainment of high added-value products, such as biorationals for crops and forest species protection.

All organs of the plant contain tannins, and the tannin content can be quite high in the seeds. However, tannins have low toxicity and, because of their bitter taste and astringency, they are unlikely to be consumed in large quantities. Apart from tannins, the main chemical constituents of *Q. ilex* bark are suberin ( $\omega$ -hydroxyacids), polysaccharides, lignin, and extractives [1,3]. Other constituents are catechins and phenolic acids (4-hydroxybenzoic, caffeic, coumaric, ferulic, and gentisic acids) [4]. As for the leaf composition of *Quercus* species, tannins, catechins, and phenolic acids (e.g., gallic acid, ellagic acid, protocatechuic acid, gentisic acid, chlorogenic acid, vanillic acid, syringic acid, epicatechin, naringenin, hesperetin, formononetin, naringin, kaempferol) have also been reported [5–7]. Concerning the main components of *Q. ilex* leaf oils, oleic acid, trans-2-hexanal, viridiflorol, and sabinene have been identified [8]. Information on the phenolics present in *Q. ilex* roots and acorn extracts, as well as on acorn oil, may be found in a recent review paper by Morales [9].

Some of the aforementioned products may be susceptible to valorization as ‘green agrochemicals’, with bactericidal, fungicidal, antiviral, insecticidal, acaricidal, or nematocidal activities. Berahou et al. [10], in a study on the antibacterial properties of holm oak bark, concluded that the phytochemicals present in ethyl acetate and *n*-butanol extracts and the aqueous layer were effective against seven reference bacterial strains: *Escherichia coli* ATCC 11775, *Pseudomonas aeruginosa* Schroeter 1872 ATCC 27853, *Staphylococcus aureus* Rosenbach 1884 BCCM 21055, *Bacillus subtilis* (Ehrenberg 1835) ATCC 6051, *Klebsiella pneumoniae* Schroeter 1886 ATCC 13883, *Salmonella typhimurium* (Le Minor et al. 1982, Le Minor and Popoff 1987) ATCC 43971, *Vibrio cholerae* Pacini 1854 ATCC 14033, *Proteus mirabilis* Hauser 1885 HITM 20, *S. epidermidis* (Winslow and Winslow 1908) Evans 1916 HITM 60, *Streptococcus pyogenes* Rosenbach 1884 HITM 100, and *S. agalactiae* Lehmann and Neumann 1896 HITM 80, with MIC values ranging from 128 to 512  $\mu\text{g}\cdot\text{mL}^{-1}$ .

In the work presented here, apart from the characterization of the phytochemicals contained in the oak bark extract by gas chromatography-mass spectrometry (GC–MS), the results of the study of the antifungal and anti-oomycete activity of an aqueous ammonia extract for the control of invasive forest pathogens (including the oomycete that is causing the decline of oak in the Iberian Peninsula) are presented. In particular, the efficacy of this extract has been assayed against *Fusarium circinatum* Nirenberg and O’Donnell (teleomorph *Gibberella circinata*) (EU quarantine pathogen that causes pitch canker of *Pinus* spp. and *Pseudotsuga menziesii* (Mirb.) Franco), *Cryphonectria parasitica* (Murril) M.E. Barr (responsible for chestnut blight), and *Phytophthora cinnamomi* Rands (which causes ‘root and crown rot’ in a wide range of hosts, mainly belonging to the genera *Castanea*, *Eucalyptus*, *Fagus*, *Juglans*, *Quercus*, etc.).

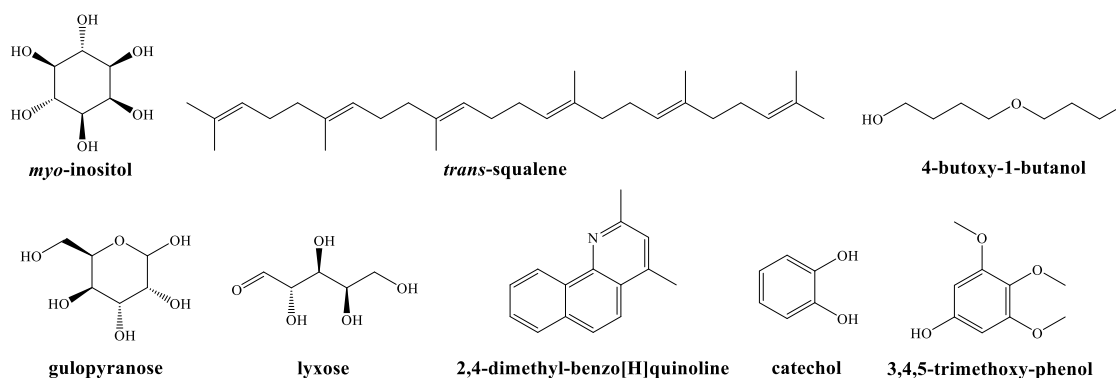
## 2. Results

### 2.1. Phytochemicals Identified by GC–MS

The main phytochemicals identified in the aqueous ammonia extract from the bark of *Q. ilex* subsp. *ballota* (Figure S1, Table 1) were: inositols (*myo*-inositol, *allo*-inositol and 1-deoxy-inositol) (19.5%), *trans*-squalene (13%), 4-butoxy-1-butanol (11.4%), gulopyranose (9.6%), lyxose (6.5%), 2,4-dimethyl-benzo[H]quinoline (5.1%), catechol (4.5%), 1-pentanol (4.5%), methoxyphenols (4.2%), and 2-hydroxy-2-cyclopenten-1-one (2.7%). Their chemical structures are presented in Figure 1.

**Table 1.** Most representative phytochemicals identified in *Q. ilex* subsp. *ballota* bark aqueous ammonia extract by GC–MS.

Peak	RT (min)	Area (%)	Assignment
1	4.3897	4.3045	oxime-, methoxy-phenyl-
2	4.6983	4.5463	1-pentanol
3	4.7695	2.7271	2-cyclopent-2-en-1-one, 2-hydroxy-
4	5.7607	2.2880	succindialdehyde
5	5.8379	3.3537	2-hydroxy- $\gamma$ -butyrolactone
6	7.2861	1.2101	2-methoxy-phenol
7	7.3573	1.4969	pentanal
8	8.9064	4.4657	catechol
9	9.0489	2.3118	1H-tetrazole, 5-(trifluoromethyl)-
10	9.8620	1.1263	pyridine, 4-nitro-, 1-oxide
11	10.3843	0.5025	1H-imidazole-4-methanol, 5-methyl-
12	11.0491	1.2235	2,6-dimethoxy-phenol
13	11.6664	1.1952	3-octyne
14	12.2183	11.4443	1-butanol, 4-butoxy-
15	12.5804	1.0696	2-trifluoroacetoxytridecane
16	14.2245	1.7480	3,4,5-trimethoxy-phenol
17	14.8833	6.9425	<i>allo</i> -inositol
18	14.9961	3.8720	inositol, 1-deoxy-
19	15.0258	0.9823	inositol, 1-deoxy-
20	15.0910	3.6660	d-lyxose
21	15.1563	2.8651	l-lyxose
22	15.2691	6.2190	d-gulopyranose
23	15.3225	3.3908	d-gulopyranose
24	15.3463	7.6969	<i>myo</i> -inositol
25	17.9103	1.2863	n-nexadecanoic acid
26	25.0920	12.9624	supraene (or <i>trans</i> -squalene)
27	26.6352	0.9232	benzo[H]quinoline, 2,4-dimethyl-
28	28.8194	1.3713	benzo[H]quinoline, 2,4-dimethyl-
29	29.5494	2.8086	benzo[H]quinoline, 2,4-dimethyl-



**Figure 1.** Main phytochemicals identified in the aqueous ammonia extract of *Q. ilex* subsp. *ballota* bark.

## 2.2. In Vitro Antimicrobial Activity

Mycelial growth inhibition tests against the three phytopathogens were conducted for the bark extract and its two main constituents. The increase in the assayed dose resulted in statistically significant differences and in full inhibition in all cases (Figure 2). The inhibitory activity of *Q. ilex* subsp. *ballota* bark extract (Figures 2a and S2) was significantly higher against *P. cinnamomi* than against *F. circinatum* and *C. parasitica* (for which total inhibition was achieved at similar concentrations, as shown by the EC<sub>90</sub> effective concentration values summarized in Table 2). Upon testing the two main constituents, namely *myo*-inositol (Figures 2b and S3) and *trans*-squalene (Figures 2c and S4), it could be observed that the latter showed much higher efficacy than the former, attaining full inhibition of *F. circinatum*, *C. parasitica*, and *P. cinnamomi* at concentrations as low as 250, 187.5, and 85.9  $\mu\text{g}\cdot\text{mL}^{-1}$ , respectively (vs. 1000, 750 and 375  $\mu\text{g}\cdot\text{mL}^{-1}$ , respectively, for *myo*-inositol).

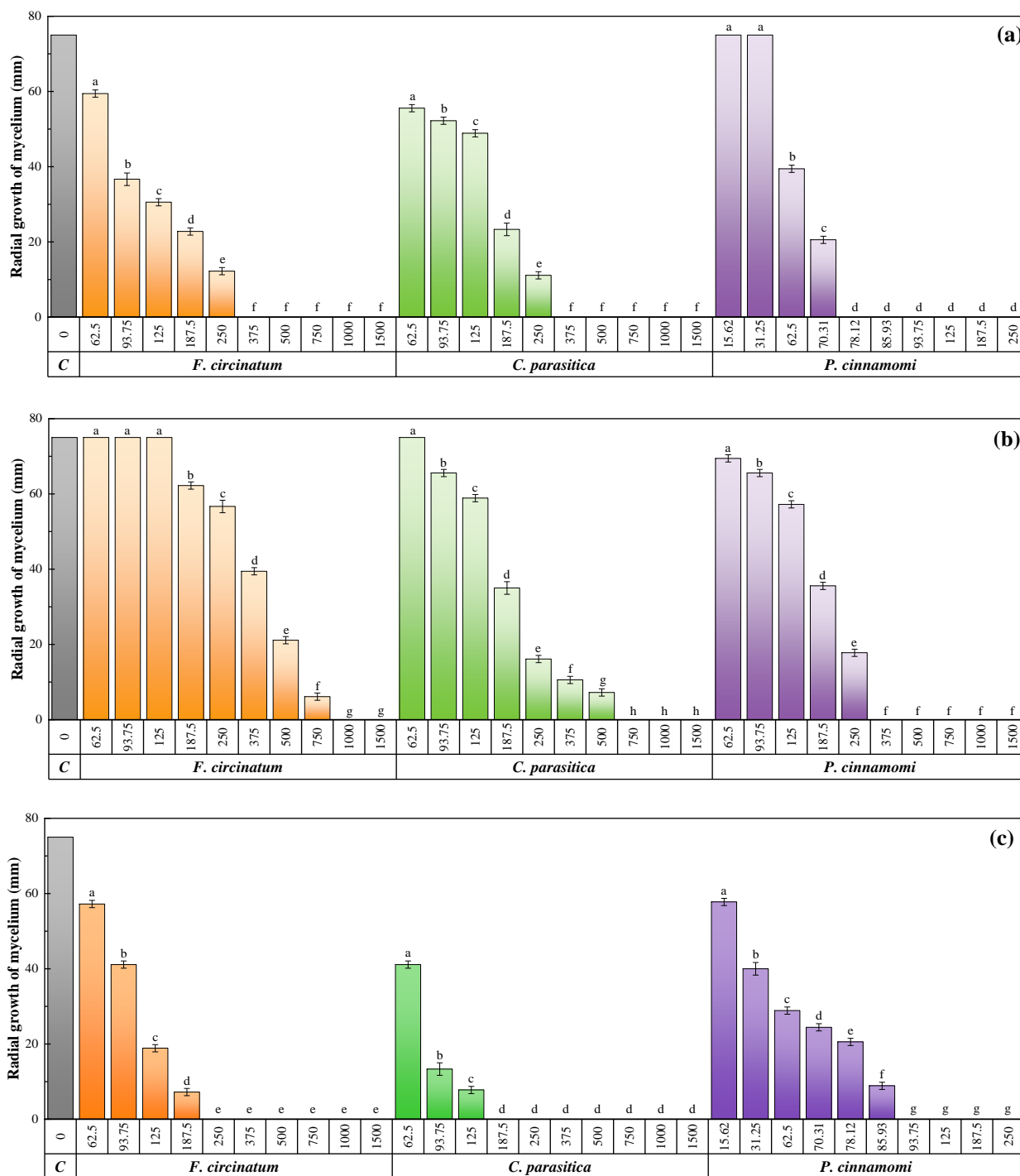
**Table 2.** EC<sub>50</sub> and EC<sub>90</sub> effective concentrations (in  $\mu\text{g}\cdot\text{mL}^{-1}$ ) of *Q. ilex* subsp. *ballota* bark extract and its main constituents against the pathogens under study.

Product	Effective Concentration	<i>F. circinatum</i>	<i>C. parasitica</i>	<i>P. cinnamomi</i>
<i>Q. ilex</i> subsp. <i>ballota</i> bark extract	EC <sub>50</sub>	92.1	142.3	63.4
	EC <sub>90</sub>	322.4	294.9	75.2
<i>myo</i> -inositol	EC <sub>50</sub>	375.9	171.8	174.9
	EC <sub>90</sub>	710.2	472.6	321.5
<i>trans</i> -squalene	EC <sub>50</sub>	106.4	59.0	38.2
	EC <sub>90</sub>	173.6	135.2	87.8

The activity of the holm oak extract was compared with that of a commercial systemic, broad-spectrum fungicide frequently used in forestry and agriculture to control numerous plant diseases, viz. Azoxystrobin. This popular synthetic pesticide of the strobilurin family [11] inhibits pathogens' ability to respire their mitochondria and impairs a number of biological and biochemical functions of living cells (by preventing electron transfer, stopping the synthesis of adenosine triphosphate, and disrupting the flow of energy) [12]. At the manufacturer's recommended dose (62.5  $\text{mg}\cdot\text{mL}^{-1}$ ), 68%, 81.3%, and 92% inhibition was attained against *F. circinatum*, *C. parasitica*, and *P. cinnamomi*, respectively (corresponding to radial growth values of 24, 14, and 6 mm, respectively).

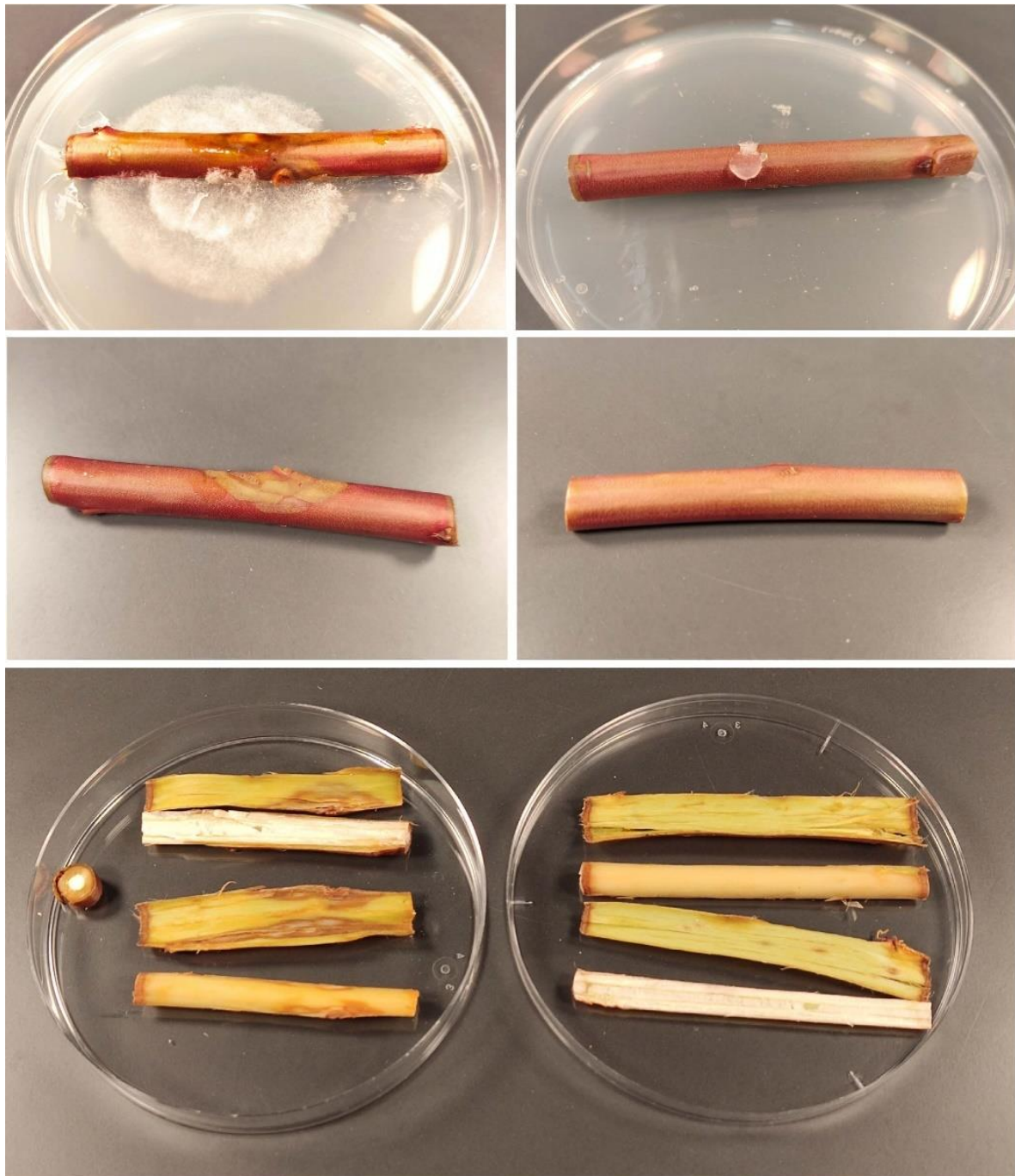
## 2.3. Protection of Excised Stems against *P. cinnamomi*

*Ex situ* tests conducted on almond rootstock 'Garnem' excised stems were conducted to assess the efficacy of the treatment against the phytopathogen for which the best in vitro results have been attained, viz. *P. cinnamomi*. At the lowest assayed dose, i.e., the MIC value obtained in the in vitro tests (78.2  $\mu\text{g}\cdot\text{mL}^{-1}$ ), no protection was observed, with canker lengths similar to those of the untreated stems. At five times the MIC dose (391  $\mu\text{g}\cdot\text{mL}^{-1}$ ), large cankers were also registered, with no significant differences vs. the control. It was necessary to increase the dosage up to 10 times the MIC (782  $\mu\text{g}\cdot\text{mL}^{-1}$ ) to obtain full protection of the excised stems, as shown in Figure 3. At this concentration, no signs of fungal colonization were observed in any of the replicates, neither in the outer bark nor in the cambium tissues.



**Figure 2.** Mycelial growth inhibition attained with (a) *Q. ilex subsp. ballota* bark extract, (b) myo-inositol, and (c) trans-squalene against *F. circinatum*, *C. parasitica*, and *P. cinnamomi* at concentrations ranging from 62.5 to 1500  $\mu\text{g}\cdot\text{mL}^{-1}$  (or from 15.6 to 250  $\mu\text{g}\cdot\text{mL}^{-1}$  for *Q. ilex subsp. ballota* bark extract and trans-squalene against *P. cinnamomi*). The same letters above concentrations indicate that they are not significantly different at  $p < 0.05$ . Error bars represent standard deviations.





**Figure 3.** ‘Garnem’ stem segments artificially inoculated with *P. cinnamomi* after 4 days of incubation: (left) untreated samples; (right) samples treated with holm oak bark extract at a  $782 \mu\text{g}\cdot\text{mL}^{-1}$  ( $\text{MIC}\times 10$ ) dose.

To fulfill Koch’s postulates, samples from both cankers of inoculated ‘Garnem’ stems and colonized PDA plates were taken apart and mounted on a microscope slide with 3% KOH as mounting media and morphologically inspected to confirm the identity of the microorganism responsible for the lesions. These microscopical observations confirmed the presence of somatic and reproductive structures compatible with those of *P. cinnamomi*.

### 3. Discussion

#### 3.1. On the Phytochemical Composition

Differences in the phytochemical profiles between those reported in the literature [1,3–8] and the one described in this study should be mainly ascribed to differences in extraction media and methodology, as well as in the method of acquisition [7], although slight differences between subspecies cannot be ruled out. Whereas the results of this study were obtained for an aqueous ammonia extract and applying GC–MS, the results by Meziti et al. [4] and Hadidi et al. [6] corresponded to hydromethanolic extracts characterized by high-performance liquid chromatography (HPLC) and high-performance liquid chromatography with a diode array detector (HPLC–DAD), respectively; the thorough study conducted by Sousa et al. [1] used dichloromethane as the extraction medium and GC–MS; Karioti et al. [5] chose diethylether for the extraction and used HPLC–DAD–MS; and Dallali et al. [8], also in diethylether medium, determined the constituents of the essential oils by gas chromatography with flame-ionization detection (GC–FID). However, the main constituents identified in the present study have been reported for other plant extracts in the literature: for instance, inositol was previously identified in *Abrus precatorius* L. seeds [13], *Cocos nucifera* L. [14], *Crinum latifolium* L. leaves [15], and *Rhizophora apiculata* Blume roots [16]. Myo-inositol has been found in the latex of *C. bonplandianum* L. [17]. Squalene is a component of *Cuscuta reflexa* Roxb., *A. precatorius*, *Abutilon indicum* L., *Acalypha indica* L., *Ammannia baccifera* L. [18], *C. maxima* Duchesne [19], *Jasminum grandiflorum* L. [20], and *Leucas aspera* (Willd.) Link [21]. Concerning the dialkyl ether 4-butoxy-1-butanol, it has been identified in *Apium graveolens* L. leaves by Nagella et al. [22].

#### 3.2. Antimicrobial Activity Comparison

Regarding the antimicrobial activity of *Q. ilex* extracts, few studies are available in the literature (Table S1). As for leaf extracts, Boy et al. [23] evaluated the efficacy of *Q. ilex* leaf extracts obtained by ultrasonication in 90% (*v/v*) ethanol-water against yeasts responsible for food spoilage, finding a high inhibition capacity against *Candida boidinii* C. ramirez, *Priceomyces carsonii* (Phaff et Knapp) Suzuki et Kurtzman, *Kregervanrija fluxuum*, (Phaff and E.P. Knapp) Kurtzman and *Zygosacharomyces bailii* (Lindner) Guillerm at a concentration of 2000  $\mu\text{g}\cdot\text{mL}^{-1}$ , attributed to the high content of phenolic compounds; Sánchez-Gutiérrez et al. [24] demonstrated the antibacterial activity of an aqueous extract of *Q. ilex* leaves obtained by a microwave-assisted extraction procedure against foodborne Gram- and Gram+ bacteria with inhibition values in the 1000 to 5000  $\mu\text{g}\cdot\text{mL}^{-1}$  range; and Güllüce et al. [25] tested in vitro a methanol extract of *Q. ilex* leaves against a wide range of human and plant-associated microorganisms, including *Pseudomonas syringae* Van Hall 1904, with a MIC of 250  $\mu\text{g}\cdot\text{mL}^{-1}$ . Berahou et al. [10] tested different solvents (ethyl acetate, *n*-butanol, or water) to prepare *Q. ilex* bark extracts, and assayed them against 11 reference bacterial strains, finding inhibition values ranging from 128 to 512  $\mu\text{g}\cdot\text{mL}^{-1}$ ; Merghache et al. [26] showed the inhibitory capacity of *Q. ilex* wood ashes against *Candida albicans* at a 5% concentration; and Bakour et al. [27] studied the antibacterial effect of the ethanolic extract of pollen from six botanicals, including *Q. ilex*, finding that it was the most efficient against multidrug-resistant bacteria.

To date, and to the best of the authors' knowledge, no data on the antifungal/antioomycete action of *Q. ilex* bark extracts have been reported. However, results on the antifungal activity of other species of the genus *Quercus* are available. For example, *Q. suber* L. bark acetone extract showed strong antifungal activity against *Trichophyton verrucosum* E. Bodin and *T. mentagrophytes* C.P. Robin) R. Blanch., with MIC values of 20  $\mu\text{g}\cdot\text{mL}^{-1}$  [28]. Antifungal activity against *Aspergillus flavus* Link, *A. ochraceus* Willhem, *A. niger* Tiegh., *C. albicans* (C.P. Robin) Berkhout, *Penicillium feniculosum* Thom, and *P. ochrochloron* Biourge has also been observed for methanolic extracts of *Q. acutissima* Carruth., *Q. macrocarpa* Michx., and *Q. robur* L. bark, with MIC values ranging from 160 to 2000  $\mu\text{g}\cdot\text{mL}^{-1}$  [29]. Dania et al. [30] found that *Q. phillyreoides* A. Gray bark aqueous extract, at a concentration of 3%, resulted in strong inhibition of mycelial growth (>77%) in in vitro tests against

*Rhizoctonia solani* J.G. Kühn, *Lasiodiplodia theobromae* (Pat.) Griffon and Maubl., *A. niger*, *Sclerotium rolfsii* Sacc., *P. oxalicum* Currie and Thom, and *F. oxysporum* Schltld. Inhibitions in the range of 60–80.5% against *C. glabrata* (H.W. Anderson) S.A. Mey. and Yarrow, *C. albicans*, *A. niger*, *A. flavus*, *F. solani*, and *Microsporium canis* E. Bodin ex Guég. have been reported for some compounds present in the methanolic extract of *Q. incana* W. Bartram bark at a concentration of 5000  $\mu\text{g}\cdot\text{mL}^{-1}$  [31]. Hence, the results obtained for the aqueous ammonia extract under study (with  $\text{EC}_{90}$  values between 75 and 322  $\mu\text{g}\cdot\text{mL}^{-1}$ ) are among the lowest reported for *Quercus* spp. and may be regarded as very promising, especially in the case of *P. cinnamomi*.

### 3.3. Comparison of Efficacy vs. Other Natural Compounds

Table 3 summarizes a literature search on the inhibitory values of natural compounds evaluated against *F. circinatum*, *C. parasitica*, and *P. cinnamomi* with those obtained in this investigation. The MIC values given below should be taken with caution, given that the susceptibility profile depends on the isolates as well as on the testing methods used, and provided that units substantially differ (e.g., when essential oils are used as biofumigants, MICs are expressed in  $\mu\text{g}\cdot\text{mL}^{-1}$  air, and the MICs of compounds tested by the agar/liquid dilution methods are expressed in  $\mu\text{g}\cdot\text{mL}^{-1}$ ).

**Table 3.** Inhibition values reported in the literature for other bioactive natural products against the three pathogens under study.

Pathogen	Source	Natural Product	Inhibitory Value	Ref.
<i>F. circinatum</i>	Aqueous ammonia bark extract (1:1)	<i>Quercus ilex</i> subsp. <i>ballota</i>	MIC = 375 $\mu\text{g}\cdot\text{mL}^{-1}$	This work
	Commercial EOs	<i>Artemisa arborescens</i> EO	n.a.	[34]
		<i>Anthemis nobilis</i> EO	n.a.	
		<i>Coriandrum sativum</i> EO	MIC > 28 $\mu\text{g}\cdot\text{mL}^{-1}$ air	
		<i>Cyperus scariosus</i> EO	MIC > 28 $\mu\text{g}\cdot\text{mL}^{-1}$ air	
		<i>Commiphora myrrha</i> EO	MIC > 28 $\mu\text{g}\cdot\text{mL}^{-1}$ air	
		<i>Pastinaca sativa</i> EO	MIC > 28 $\mu\text{g}\cdot\text{mL}^{-1}$ air	
		<i>Pogostemon patchouli</i> EO	MIC > 28 $\mu\text{g}\cdot\text{mL}^{-1}$ air	
		<i>Miroxylon balsamum</i> EO	MIC > 28 $\mu\text{g}\cdot\text{mL}^{-1}$ air	
		<i>Salvia stenophylla</i> EO	n.a.	
		<i>Santalum album</i> EO	n.a.	
		<i>Santolina chamaecyparissus</i> EO	n.a.	
		<i>Nardostachys sinensis</i> EO	n.a.	
		<i>Liquidambar orientalis</i> EO	MIC > 28 $\mu\text{g}\cdot\text{mL}^{-1}$ air	
		<i>Valeriana wallichii</i> EO	MIC > 28 $\mu\text{g}\cdot\text{mL}^{-1}$ air	
		<i>Lippia javanica</i> EO	n.a.	
		<i>Leptospermum scoparium</i> EO	MIC > 28 $\mu\text{g}\cdot\text{mL}^{-1}$ air	
		<i>Juniperus mexicana</i> EO	n.a.	
		<i>Daucus carota</i> EO	MIC > 28 $\mu\text{g}\cdot\text{mL}^{-1}$ air	
		<i>Calitis intratropica</i> EO	MIC > 28 $\mu\text{g}\cdot\text{mL}^{-1}$ air	
Commercial EOs	<i>Eucalyptus citriodora</i> EO <i>Melaleuca quinquenervia</i> EO <i>L. petersonii</i> EO	MIC > 28 $\mu\text{g}\cdot\text{mL}^{-1}$ air MIC > 28 $\mu\text{g}\cdot\text{mL}^{-1}$ air MIC > 28 $\mu\text{g}\cdot\text{mL}^{-1}$ air	[35]	
Foliage, wood, and bark	<i>Cryptomeria japonica</i> EO	n.a.	[41]	
Commercial EOs	<i>Syzygium aromaticum</i> EO <i>Cymbopogon citratus</i> EO <i>Thymus vulgaris</i> EO <i>Pelargonium graveolens</i> EO	MIC = 400–500 $\mu\text{L}\cdot\text{L}^{-1}$ MIC = 400–700 $\mu\text{L}\cdot\text{L}^{-1}$ MIC = 500 $\mu\text{L}\cdot\text{L}^{-1}$ MIC = 900–1000 $\mu\text{L}\cdot\text{L}^{-1}$	[33]	
n.e.	<i>Cinnamomum verum</i> EO <i>Foeniculum vulgare</i> EO <i>S. aromaticum</i> EO	MIC = 10% v/v MIC = 50% v/v MIC = 15% v/v	[32]	



Table 3. Cont.

Pathogen	Source	Natural Product	Inhibitory Value	Ref.
<i>C. parasitica</i>	Aqueous ammonia bark extract (1:1)	<i>Q. ilex</i> subsp. <i>ballota</i>	MIC = 375 $\mu\text{g}\cdot\text{mL}^{-1}$	This work
	Commercial EOs	<i>A. arborescens</i> EO	MIC > 28 $\mu\text{g}\cdot\text{mL}^{-1}$ air	[34]
		<i>A. nobilis</i> EO	n.a	
		<i>C. sativum</i> EO	n.a	
		<i>C. scariosus</i> EO	MIC > 28 $\mu\text{g}\cdot\text{mL}^{-1}$ air	
		<i>C. myrrha</i> EO	n.a	
		<i>P. sativa</i> EO	MIC > 28 $\mu\text{g}\cdot\text{mL}^{-1}$ air	
		<i>P. patchouli</i> EO	MIC > 28 $\mu\text{g}\cdot\text{mL}^{-1}$ air	
		<i>M. balsamum</i> EO	MIC > 28 $\mu\text{g}\cdot\text{mL}^{-1}$ air	
		<i>S. stenophylla</i> EO	MIC > 28 $\mu\text{g}\cdot\text{mL}^{-1}$ air	
		<i>S. album</i> EO	MIC > 28 $\mu\text{g}\cdot\text{mL}^{-1}$ air	
		<i>S. chamaecyparissus</i> EO	MIC > 28 $\mu\text{g}\cdot\text{mL}^{-1}$ air	
		<i>N. sinensis</i> EO	MIC > 28 $\mu\text{g}\cdot\text{mL}^{-1}$ air	
		<i>L. orientalis</i> EO	MIC > 28 $\mu\text{g}\cdot\text{mL}^{-1}$ air	
		<i>V. wallichii</i> EO	MIC > 28 $\mu\text{g}\cdot\text{mL}^{-1}$ air	
		<i>L. javanica</i> EO	MIC > 28 $\mu\text{g}\cdot\text{mL}^{-1}$ air	
		<i>L. scoparium</i> EO	n.a	
	<i>J. mexicana</i> EO	n.a		
	<i>D. carota</i> EO	n.a		
	<i>C. intratropica</i> EO	n.a		
Commercial EOs	<i>E. citriodora</i> EO	MIC > 28 $\mu\text{g}\cdot\text{mL}^{-1}$ air	[35]	
	<i>M. quinquenervia</i> EO	MIC > 28 $\mu\text{g}\cdot\text{mL}^{-1}$ air		
	<i>L. petersonii</i> EO	MIC > 28 $\mu\text{g}\cdot\text{mL}^{-1}$ air		
Foliage, wood, and bark	<i>C. japonica</i> EO	n.a.	[41]	
n.e.	<i>Illicium verum</i> EO	MIC > 0.32 $\mu\text{g}\cdot\text{mL}^{-1}$ air	[36]	
	<i>J. oxycedrus</i> EO	MIC = 0.08–0.16 $\mu\text{g}\cdot\text{mL}^{-1}$ air		
	<i>E. globulus</i> EO	MIC = 0.08–0.16 $\mu\text{g}\cdot\text{mL}^{-1}$ air		
	<i>Lavandula angustifolia</i> EO	MIC > 0.32 $\mu\text{g}\cdot\text{mL}^{-1}$ air		
	<i>Citrus limon</i> EO	MIC > 0.32 $\mu\text{g}\cdot\text{mL}^{-1}$ air		
	<i>C. flexuosus</i> EO	MIC > 0.32 $\mu\text{g}\cdot\text{mL}^{-1}$ air		
	<i>Mentha piperita</i> EO	MIC = 0.02 $\mu\text{g}\cdot\text{mL}^{-1}$ air		
	<i>Origanum vulgare</i> EO	MIC = 0.16–0.32 $\mu\text{g}\cdot\text{mL}^{-1}$ air		
	<i>Pinus nigra</i> EO	MIC = 0.02 $\mu\text{g}\cdot\text{mL}^{-1}$ air		
	<i>P. pinaster</i> EO	MIC = 0.16–0.32 $\mu\text{g}\cdot\text{mL}^{-1}$ air		
	<i>P. silvestris</i> EO	MIC = 0.32 $\mu\text{g}\cdot\text{mL}^{-1}$ air		
	<i>Rosmarinus officinalis</i> EO	MIC $\geq$ 0.32 $\mu\text{g}\cdot\text{mL}^{-1}$ air		
	<i>S. officinalis</i> EO	MIC = 0.04 $\mu\text{g}\cdot\text{mL}^{-1}$ air		
	<i>Abies alba</i> EO	MIC = 0.02 $\mu\text{g}\cdot\text{mL}^{-1}$ air		
<i>Gaultheria procumbens</i> EO	MIC > 0.32 $\mu\text{g}\cdot\text{mL}^{-1}$ air			
Commercial EOs	<i>Pimenta racemosa</i> EO	MIC > 28 $\mu\text{g}\cdot\text{mL}^{-1}$ air	[37]	
	<i>J. oxycedrus</i> EO	MIC > 28 $\mu\text{g}\cdot\text{mL}^{-1}$ air		
	<i>C. nardus</i> EO	MIC > 28 $\mu\text{g}\cdot\text{mL}^{-1}$ air		
	<i>P. graveolens</i> EO	MIC > 28 $\mu\text{g}\cdot\text{mL}^{-1}$ air		
	<i>Cuminum cyminum</i> EO	MIC > 28 $\mu\text{g}\cdot\text{mL}^{-1}$ air		
	<i>Myristica fragrans</i> EO	MIC > 28 $\mu\text{g}\cdot\text{mL}^{-1}$ air		
	<i>C. martini</i> EO	MIC > 28 $\mu\text{g}\cdot\text{mL}^{-1}$ air		
	<i>M. pulegium</i> EO	MIC > 28 $\mu\text{g}\cdot\text{mL}^{-1}$ air		
	<i>M. spicata</i> EO	MIC > 28 $\mu\text{g}\cdot\text{mL}^{-1}$ air		
<i>T. vulgaris</i> EO	MIC = 14 $\mu\text{g}\cdot\text{mL}^{-1}$ air			

Table 3. Cont.

Pathogen	Source	Natural Product	Inhibitory Value	Ref.
<i>P. cinnamomi</i>	Aqueous ammonia bark extract (1:1)	<i>Q. ilex</i> subsp. <i>ballota</i>	MIC = 78.12 $\mu\text{g}\cdot\text{mL}^{-1}$	This work
	Water, ethanol (70%), lanolin (10%), or cocoa butter (10%)	<i>L. tridentata</i> PE	MIC <sub>90</sub> = 11.2–7213 $\mu\text{g}\cdot\text{mL}^{-1}$	[38]
		<i>F. cernua</i> PE	MIC <sub>90</sub> = 23.6–619 $\mu\text{g}\cdot\text{mL}^{-1}$	
		<i>A. lechuguilla</i> PE	MIC <sub>90</sub> = 58.5–327 $\mu\text{g}\cdot\text{mL}^{-1}$	
		<i>Opuntia ficus-indica</i> PE	MIC <sub>90</sub> = 3595–409, 181 $\mu\text{g}\cdot\text{mL}^{-1}$	
		<i>L. graveolens</i> PE	MIC <sub>90</sub> = 4825–n.a. $\mu\text{g}\cdot\text{mL}^{-1}$	
		<i>Carya illinoensis</i> PE	n.a.	
		<i>Yucca filifera</i> PE	n.a.	
		<i>S. officinalis</i> EO	MIC > 1600 $\mu\text{g}\cdot\text{mL}^{-1}$	
	n.e.	<i>S. rosmarinus</i> EO	MIC > 1600 $\mu\text{g}\cdot\text{mL}^{-1}$	[39]
		<i>O. vulgare</i> EO	MIC > 200 $\mu\text{g}\cdot\text{mL}^{-1}$	
		<i>Laurus nobilis</i> EO	MIC > 1600 $\mu\text{g}\cdot\text{mL}^{-1}$	
<i>C. sativum</i> EO		MIC = 800 $\mu\text{g}\cdot\text{mL}^{-1}$		
<i>T. vulgaris</i> EO		MIC = 200 $\mu\text{g}\cdot\text{mL}^{-1}$		
<i>M. piperita</i> EO		MIC = 800 $\mu\text{g}\cdot\text{mL}^{-1}$		
	<i>L. intermedia</i> EO	MIC = 1600 $\mu\text{g}\cdot\text{mL}^{-1}$		
Aerial parts	<i>Beilschmiedia miersii</i> EO	MIC = 300 $\mu\text{g}\cdot\text{mL}^{-1}$	[40]	
Leaf methanol extract (1:5)	<i>Arbutus unedo</i> PE	MIC = 5990 $\mu\text{g}\cdot\text{mL}^{-1}$	[42]	

PE = plant extract; EO = essential oil; n.a. = no activity; n.e. = not specified.

In the case of *F. circinatum*, the activity of the aqueous ammonia extract of *Q. ilex* subsp. *ballota* would be higher than those of cinnamon, fennel, clove [32], thyme, rose geranium, and lemon grass essential oils [33] (assuming that many essential oils have a density somewhere in the vicinity of 0.9  $\text{g}\cdot\text{mL}^{-1}$ ). As noted above, lower MIC values reported by Lee et al. [34] and Lee et al. [35] may not be compared, as in those studies the essential oils were used as biofumigants. The same applies to the MIC values reported by Lee et al. [34], Lee et al. [35], Lukovic et al. [36], and Kim et al. [37] against *C. parasitica*.

As for *P. cinnamomi*, holm oak bark extract activity would be lower than that of ethanolic plant extracts of *Larrea tridentata* (Sessé and Moc. ex DC.) Coville and *Flourensia cernua* DC. (Hojasé, Hojasén) (EC<sub>90</sub> values of 11.19 and 23.61  $\mu\text{g}\cdot\text{mL}^{-1}$ , respectively), and the lanolin extract of *Agave lechuguilla* Torr. (MIC<sub>90</sub> = 58.3  $\mu\text{g}\cdot\text{mL}^{-1}$ ) [38], and higher than those of, for example, the most effective essential oils reported by Giamperi et al. [39] (those of *Origanum vulgare* L. and *Thymus vulgaris* L., with MICs  $\geq$  200  $\mu\text{g}\cdot\text{mL}^{-1}$ ) and of the essential oil of aerial parts of *Beilschmiedia miersii* (Gay) Kosterm. (MIC = 300  $\mu\text{g}\cdot\text{mL}^{-1}$ ) [40].

### 3.4. Comparison with a Conventional Fungicide

Concerning the chemical fungicide chosen as a reference, viz. azoxystrobin, it is one of the world's biggest selling fungicides [43]. Data on its efficacy against the three phytopathogens under study is scarce in the literature. Benalcázar Villalba [44] reported EC<sub>50</sub> values in the 49.8–263.8  $\mu\text{g}\cdot\text{mL}^{-1}$  range against *Fusarium* spp. associated with the death of *Pinus radiata* D. Don. and *P. patula* Schiede ex Schltdl. and Cham. seedlings in the nursery, and González-Varela and González [45] found that it was unable to stop *C. parasitica* growth at doses in the 1–16  $\mu\text{g}\cdot\text{mL}^{-1}$  range.

Based on the tests conducted in this study at the recommended dose (62.5  $\text{mg}\cdot\text{mL}^{-1}$ ), at which full inhibition was not reached, it may be inferred that the activity of the holm oak bark extract would be much higher (with EC<sub>90</sub> values ranging from 75 to 322  $\mu\text{g}\cdot\text{mL}^{-1}$ ).

### 3.5. Mode of Action

To provide a tentative explanation of the observed antifungal and anti-oomycete activity, a description of each of the main extract constituents and their previously reported activities is first presented. Inositol is a group of nine stereoisomers, but the name is usually used to describe the most common type of inositol, *myo*-inositol (*cis*-1,2,3,5-

*trans*-4,6-cyclohexanehexol), considered a pseudovitamin. It has been reported to be an efficient adjuvant to antibiotic drugs, increasing their antimicrobial activity [46]. In a recent study, Ratiu et al. [47] examined 40 different plant species that contained variable quantities of *myo*-inositol. The fruits of blueberries, lettuce, and cinnamon had the greatest concentrations (0.96, 1.07, and 1.21 mg·g<sup>-1</sup> dry plant material, respectively). Supraene (*trans*-squalene) is a linear triterpene synthesized in plants, animals, bacteria, and fungi as a precursor for the synthesis of secondary metabolites such as sterols, hormones, or vitamins. It is known to have active oxygen-scavenging activities, preventing oxidative damage. Concerning its fungicidal action, also reported for other supraene-rich natural products (summarized in Table S2 [48–51]), it is known that the intracellular accumulation of squalene disrupts fungal cell membranes, possibly by forming squalene vesicles that weaken fungal cells by extracting essential membrane lipid components [52]. In fact, the mechanism of action of terbinafine and other antifungal drugs is based on the inhibition of squalene peroxidase, resulting in the aforementioned squalene accumulation [53]. The dialkyl ether 4-butoxy-1-butanol has been identified in benzene/alcohol extractives of *Artocarpus lingnanensis* Merr. [54]. As regards 2,4-dimethyl-benzo[H]quinolone, it should exhibit antifungal activity, like other benzoquinoline derivatives [55]. Methoxyphenols as 2-methoxyphenol, 2,6-dimethoxyphenol, and 3,4,5-trimethoxy-phenol are among the phenolic compounds produced by alkaline destruction of poplar wood bark and exhibit antioxidant properties [56] and anti-quorum sensing effects [57,58]. For the minority component 2-hydroxy-2-cyclopent-2-en-1-one, Naika and Pavani [59] advocated the existence of antibacterial activity.

Based on the above-discussed activities and taking into consideration the EC<sub>90</sub> values for the two main constituents of the aqueous ammonia extract (between 321 and 710 µg·mL<sup>-1</sup> for *myo*-inositol and ranging from 88 to 174 µg·mL<sup>-1</sup> for squalene), the antimicrobial activity of the extract may be mainly ascribed to the *trans*-squalene content, whereas inositol would have a weaker activity and would act as an adjuvant of squalene. Nonetheless, contributions from other minor constituents such as 2,4-dimethyl-benzo[H]quinoline and 3,4,5-trimethoxyphenol cannot be ruled out (and their possible synergies may account for the higher efficacy of the bark extract against *P. cinnamomi* in comparison to that of pure squalene). Further research on the activity of these phytochemicals and their combinations is needed to elucidate the mechanism of action of the bark extract.

## 4. Material and Methods

### 4.1. Reagents

Ammonium hydroxide, 50% *v/v* aq. soln. (CAS No. 1336-21-6), was purchased from Alfa Aesar (Ward Hill, MA, USA). Acetic acid (purum, 80% in H<sub>2</sub>O; CAS No. 64-19-7); *myo*-inositol (≥99%; CAS No. 87-89-8), squalene (analytical standard; CAS No. 111-02-4), and potato dextrose agar (PDA) were supplied by Sigma Aldrich Química S.A. (Madrid, Spain); Alkir<sup>®</sup> fungicide co-adjuvant (ROPF No. 19454) was purchased from De Sangosse Ibérica (Valencia, Spain).

The commercial fungicide used for comparison purposes, viz. Ortiva<sup>®</sup> (azoxystrobin 25%; reg. no. 22000; Syngenta, Basel, Switzerland) was kindly provided by the Plant Health and Certification Service (CSCV) of Gobierno de Aragón (Zaragoza, Spain). This fungicide was selected due to its low risk of resistance, widespread use, favorable toxicological and environmental profile, and significant pathogen control ability.

### 4.2. Phytopathogen Isolates

*Fusarium circinatum*, *Cryphonectria parasitica*, and *Phytophthora cinnamomi* isolates were supplied as PDA subcultures by the Calabazanos Forest Health Center (Villamuriel de Cerrato, Palencia, Spain).

#### 4.3. Plant Material

The holm oak bark was torn from an old specimen from the holm oak forest of Nisano (Huesca, Spain). The sample was shade-dried and pulverized to a fine powder in a mechanical grinder.

#### 4.4. Preparation of the Extract

An aqueous ammonia solution was chosen to dissolve the bioactive compounds of interest contained in the bark of holm oak. The bark extract was prepared according to the procedure described in [60]. Briefly stated, a probe-type ultrasonicator (model UIP1000hdT; 1000 W, 20 kHz; Hielscher Ultrasonics, Teltow, Germany) was used to sonicate the bark sample for 10 min in pulse mode with a 2 min break after every 2.5 min of sonication, and the sample was then left to settle for 24 h. Acetic acid was then used to change the pH to neutral. After 15 min of centrifuging the solution at 9000 rpm, the supernatant was filtered using Whatman No. 1 paper.

#### 4.5. Characterization of the Extract

The aqueous ammonia extract of oak bark was analyzed by gas chromatography-mass spectrometry (GC-MS) at the Research Support Services (STI) at the University of Alicante (Alicante, Spain), using a gas chromatograph model 7890A coupled to a quadrupole mass spectrometer model 5975C (both from Agilent Technologies, Santa Clara, CA, USA). The operating conditions were: injector temperature = 280 °C, splitless mode; injection volume = 1 µL; initial temperature = 60 °C, 2 min, followed by a ramp of 10 °C·min<sup>-1</sup> to a final temperature of 300 °C, 15 min. The chromatographic column used for the separation of the compounds was an Agilent Technologies HP-5MS UI of 30 m in length, 0.250 mm diameter, and 0.25 µm film. The mass spectrometer conditions were: mass spectrometer electron impact source temperature = 230 °C and quadrupole temperature = 150 °C; ionization energy = 70 eV. Test mixture 2 for apolar capillary columns according to Grob (Supelco 86501) and PFTBA tuning standards were used for calibration, purchased from Sigma Aldrich Química S.A. (Madrid, Spain). Comparison of mass spectra and retention times with those of reference compounds and computer matching with the databases of the National Institute of Standards and Techniques (NIST11) and the monograph by Adams [61] were used for compound identification.

#### 4.6. In Vitro Antimicrobial Activity Assessment

The antimicrobial activity of the treatment was assessed according to EUCAST standard antifungal susceptibility testing techniques [62], using the agar dilution method. Aliquots of stock solution were mixed into a pouring PDA medium to obtain concentrations ranging from 62.5 to 1500 µg·mL<sup>-1</sup> (albeit lower concentrations of 15.62 and 31.25 µg·mL<sup>-1</sup> also had to be evaluated for the most efficient treatments to obtain reliable PROBIT fittings). Plugs (Ø = 5 mm) from the margins of one-week-old PDA cultures of *F. circinatum*, *C. parasitica*, and *P. cinnamomi* were transferred to plates integrating the above treatment concentrations (three plates per treatment and concentration, with two duplicates). Plates were incubated at 25 °C in the dark for one week. PDA media without any modification was employed as a control. Growth inhibition was estimated according to the formula  $((d_c - d_t)/d_c) \times 100$ , where  $d_c$  and  $d_t$  indicate the mean diameters of the control and treated colonies, respectively. The effective concentrations (EC<sub>50</sub> and EC<sub>90</sub>) were determined using PROBIT analysis in IBM SPSS Statistics v.25 software (IBM; Armonk, NY, USA).

#### 4.7. Protection Tests on Artificially Inoculated Excised Stems

Given the restrictions that apply to in vivo assays involving *P. cinnamomi*, the efficacy of the treatment was tested by artificial inoculation of excised stems in controlled laboratory conditions. Inoculation was performed according to the procedure proposed by Matheron [63], with modifications. Using a grafting knife, young stems of healthy 'Garnem' (*Prunus amygdalus* × *P. persica*) rootstock with a 1.5 cm diameter were cut into

10 cm-long sections. The excised stem pieces were immediately wrapped in moistened sterile absorbent paper, and the wounds produced were painted with Mastix<sup>®</sup>.

In the laboratory, the freshly excised stem segments were first immersed in ethanol for 1 min, then immersed in a NaClO solution for 8 min, and then thoroughly rinsed with distilled water [64]. Some of the stem segments ( $n = 15$ ) were soaked for 1 h in distilled water as a control, and the remaining stem segments were soaked for 1 h in aqueous solutions to which an appropriate amount of the bark extract had been added to obtain MIC, MIC  $\times$  5, and MIC  $\times$  10 concentrations ( $n = 15$  segments/concentration). Alkir<sup>®</sup> co-adjuvant (1%  $v/v$ ) was added to all solutions (including the control) to facilitate bark penetration of the treatment.

The stem pieces were allowed to dry, placed on an agar Petri dish, and subsequently inoculated by placing a plug ( $\varnothing = 5$  mm) from the margin of one-week-old PDA cultures of *P. cinnamomi* on the center of the outer surface of the bark. After inoculation, the stem segments were incubated in a humid chamber for 4 days at 24 °C, 95–98% RH.

The efficacy of the treatments was assessed by visual inspection of the presence of rotting at the inoculation sites, confirmed under the microscope, both on the outer bark and on the inner bark after careful removal with a scalpel to reveal the cambium. Then, the oomycete was re-isolated and morphologically identified from the lesions to fulfill Koch's postulates.

#### 4.8. Statistical Analysis

The results of the postharvest protection study were statistically analyzed in IBM SPSS Statistics v.25 software by analysis of variance (ANOVA), followed by a post hoc comparison of means by Tukey's test (because the requirements of homogeneity and homoscedasticity were met, according to the Shapiro–Wilk and Levene tests).

## 5. Conclusions

In vitro tests on the antifungal and anti-oomycete activities of the aqueous ammonia extract of holm oak bark aimed at controlling important forest phytopathogens such as *F. circinatum*, *C. parasitica*, and *P. cinnamomi*, have resulted in EC<sub>90</sub> values of 322, 295, and 75  $\mu\text{g}\cdot\text{mL}^{-1}$ , respectively. Such activity, which may be ascribed to *trans*-squalene content (13%), was shown to be much higher than that of azoxystrobin, tested for comparison purposes, and higher than most of those reported in the literature for other natural products against these forest pathogens. Although a higher dose (782  $\mu\text{g}\cdot\text{mL}^{-1}$ ) was needed to attain full inhibition in further tests conducted on excised almond 'Garnem' stems artificially infected with *P. cinnamomi*, the results suggest that *Q. ilex* subsp. *ballota* bark extract may be a promising source of bioactive compounds against phytopathogens.

**Supplementary Materials:** The following supporting information can be downloaded at: <https://www.mdpi.com/article/10.3390/ijms231911882/s1>.

**Author Contributions:** Conceptualization, J.M.-G. and J.J.B.-V.; methodology, J.J.B.-V. and B.L.-V.; validation, J.A.C.-O. and J.C.-G.; formal analysis, E.S.-H., V.G.-G., and J.C.-G.; investigation, E.S.-H., J.B.-G., J.J.B.-V., V.G.-G., J.C.-G., J.A.C.-O., J.M.-G., B.L.-V., and P.M.-R.; resources, J.A.C.-O., J.J.B.-V., and J.M.-G.; writing—original draft preparation, E.S.-H., J.B.-G., J.J.B.-V., V.G.-G., J.C.-G., J.A.C.-O., J.M.-G., B.L.-V., and P.M.-R.; writing—review and editing, E.S.-H., V.G.-G., and P.M.-R.; visualization, E.S.-H.; supervision, P.M.-R.; project administration, J.M.-G.; funding acquisition, J.M.-G. All authors have read and agreed to the published version of the manuscript.

**Funding:** This research was funded by Junta de Castilla y León under project VA258P18, with FEDER co-funding.

**Institutional Review Board Statement:** Not applicable.

**Informed Consent Statement:** Not applicable.

**Data Availability Statement:** The data presented in this study are available on request from the corresponding author. The data are not publicly available due to their relevance to an ongoing Ph.D. thesis.



**Acknowledgments:** To José Ángel Arranz Sanz and Paula Zamora Brauweiler from the Centro de Sanidad Forestal de Calabazanos for providing the phytopathogen isolates. To Pilar Blasco and Pablo Candela from the Technical Research Services of the University of Alicante for conducting the GC–MS analysis.

**Conflicts of Interest:** The authors declare no conflict of interest. The funder had no role in the design of the study; in the collection, analyses, or interpretation of data; in the writing of the manuscript, or in the decision to publish the results.

## References

1. Sousa, V.; Ferreira, J.P.A.; Miranda, I.; Quilhó, T.; Pereira, H. *Quercus rotundifolia* bark as a source of polar extracts: Structural and chemical characterization. *Forests* **2021**, *12*, 1160. [\[CrossRef\]](#)
2. Montserrat-Martí, G.; Camarero, J.J.; Palacio, S.; Pérez-Rontomé, C.; Milla, R.; Albuixech, J.; Maestro, M. Summer-drought constrains the phenology and growth of two coexisting Mediterranean oaks with contrasting leaf habit: Implications for their persistence and reproduction. *Trees* **2009**, *23*, 787–799. [\[CrossRef\]](#)
3. Ribechini, E.; Mangani, F.; Colombini, M.P. Chemical investigation of barks from broad-leaved tree species using EGA-MS and GC/MS. *J. Anal. Appl. Pyrolysis* **2015**, *114*, 235–242. [\[CrossRef\]](#)
4. Meziti, H.; Bouriche, H.; Kada, S.; Demirtas, I.; Kizil, M.; Senator, A.; Garrido, G. Phytochemical analysis, and antioxidant, anti-hemolytic and genoprotective effects of *Quercus ilex* L. and *Pinus halepensis* Mill. methanolic extracts. *J. Pharm. Pharmacogn. Res.* **2019**, *7*, 260–272.
5. Karioti, A.; Bilia, A.R.; Skaltsa, H. *Quercus ilex* L.: A rich source of polyacylated flavonoid glucosides. *Food Chem.* **2010**, *123*, 131–142. [\[CrossRef\]](#)
6. Hadidi, L.; Babou, L.; Zaidi, F.; Valentão, P.; Andrade, P.B.; Grosso, C. *Quercus ilex* L.: How season, plant organ and extraction procedure can influence chemistry and bioactivities. *Chem. Biodivers.* **2017**, *14*, e1600187. [\[CrossRef\]](#)
7. Burlacu, E.; Nisca, A.; Tanase, C. A comprehensive review of phytochemistry and biological activities of *Quercus* species. *Forests* **2020**, *11*, 904. [\[CrossRef\]](#)
8. Dallali, S.; Zouaouia, R.; Dallalic, D.; Jdidia, S.; Toumia, L. Determination of some biochemical parameters from leaves of *Quercus ilex* L.(Fagaceae), collected in Djebel Zagouan (Tunisia). *Arab. J. Med. Aromat. Plants* **2021**, *7*, 1–28.
9. Morales, D. Oak trees (*Quercus* spp.) as a source of extracts with biological activities: A narrative review. *Trends Food Sci. Technol.* **2021**, *109*, 116–125. [\[CrossRef\]](#)
10. Berahou, A.; Auhmani, A.; Fdil, N.; Benharref, A.; Jana, M.; Gadhi, C.A. Antibacterial activity of *Quercus ilex* bark's extracts. *J. Ethnopharmacol.* **2007**, *112*, 426–429. [\[CrossRef\]](#)
11. Bartlett, D.W.; Clough, J.M.; Godwin, J.R.; Hall, A.A.; Hamer, M.; Parr-Dobrzanski, B. The strobilurin fungicides. *Pest Manag. Sci.* **2002**, *58*, 649–662. [\[CrossRef\]](#)
12. Du, B.; Zhang, Z.; Liu, W.; Ye, Y.; Lu, T.; Zhou, Z.; Li, Y.; Fu, Z.; Qian, H. Acute toxicity of the fungicide azoxystrobin on the diatom *Phaeodactylum tricornerutum*. *Ecotoxicol. Environ. Saf.* **2019**, *168*, 72–79. [\[CrossRef\]](#)
13. Garaniya, N.; Bapodra, A. Ethno botanical and phytopharmacological potential of *Abrus precatorius* L.: A review. *Asian Pac. J. Trop. Biomed.* **2014**, *4*, S27–S34. [\[CrossRef\]](#)
14. Yong, J.W.; Ge, L.; Ng, Y.F.; Tan, S.N. The chemical composition and biological properties of coconut (*Cocos nucifera* L.) water. *Molecules* **2009**, *14*, 5144–5164. [\[CrossRef\]](#)
15. Nguyen Thi, T.N.; Kamenarska, Z.; Handjieva, N.; Bankova, V.; Popov, S. GC-MS study on polar constituents of *Crinum latifolium*. *Comptes Rendus L'academie Bulg. Des Sci.* **2001**, *54*, 8–41.
16. Lakshmi, V.; Gupta, P.; Tiwari, P.; Srivastava, A.K. Antihyperglycemic activity of *Rhizophora apiculata* Bl. in rats. *Nat. Prod. Res.* **2006**, *20*, 1295–1299. [\[CrossRef\]](#)
17. Vivekanandadasan, V.; Rajangam, U. GC-MS analysis of leaf, fruits and latex of *Croton bonplandianum* Baill. *Int. J. Biochem. Res. Rev.* **2015**, *5*, 187–197.
18. Suman, T.Y.; Elumalai, D.; Kaleena, P.K.; Rajasree, S.R.R. GC–MS analysis of bioactive components and synthesis of silver nanoparticle using *Ammannia baccifera* aerial extract and its larvicidal activity against malaria and filariasis vectors. *Ind. Crops Prod.* **2013**, *47*, 239–245. [\[CrossRef\]](#)
19. Stevenson, D.G.; Eller, F.J.; Wang, L.; Jane, J.-L.; Wang, T.; Inglett, G.E. Oil and tocopherol content and composition of pumpkin seed oil in 12 cultivars. *J. Agric. Food. Chem.* **2007**, *55*, 4005–4013. [\[CrossRef\]](#)
20. Wei, F.H.; Chen, F.L.; Tan, X.M. Gas chromatographic-mass spectrometric analysis of essential oil of *Jasminum officinale* L. var *grandiflorum* flower. *Trop. J. Pharm. Res.* **2015**, *14*, 149–152. [\[CrossRef\]](#)
21. Anandan, A.; Eswaran, R.; Doss, A.; Sangeetha, G.; Anand, S. Chemical compounds investigation of *Lucas aspera* leaves—a potential folklore medicinal plant. *Asian J. Pharm. Clin. Res.* **2012**, *5*, 86–88.
22. Nagella, P.; Ahmad, A.; Kim, S.-J.; Chung, I.-M. Chemical composition, antioxidant activity and larvicidal effects of essential oil from leaves of *Apium graveolens*. *Immunopharmacol. Immunotoxicol.* **2011**, *34*, 205–209. [\[CrossRef\]](#)

23. Boy, F.R.; Casquete, R.; Martínez, A.; Córdoba, M.d.G.; Ruíz-Moyano, S.; Benito, M.J. Antioxidant, antihypertensive and antimicrobial properties of phenolic compounds obtained from native plants by different extraction methods. *Int. J. Environ. Res. Public Health* **2021**, *18*, 2475. [[CrossRef](#)]
24. Sánchez-Gutiérrez, M.; Gómez-García, R.; Carrasco, E.; Bascón-Villegas, I.; Rodríguez, A.; Pintado, M. *Quercus ilex* leaf as a functional ingredient: Polyphenolic profile and antioxidant activity throughout simulated gastrointestinal digestion and antimicrobial activity. *J. Funct. Foods* **2022**, *91*, 105025. [[CrossRef](#)]
25. Güllüce, M.; Adıgüzel, A.; Ögütçü, H.; Şengül, M.; Karaman, İ.; Şahin, F. Antimicrobial effects of *Quercus ilex* L. extract. *Phytother. Res.* **2004**, *18*, 208–211. [[CrossRef](#)] [[PubMed](#)]
26. Merghache, D.; Boucherit-Otmani, Z.; El Hacı, I.A.; Chikhi, I.; Boucherit, K. Inhibitory effect of *Quercus ilex* wood ash on the growth of pathogenic microorganisms. *Phytothérapie* **2019**, *16*, S269–S272. [[CrossRef](#)]
27. Bakour, M.; Laaroussi, H.; Ousaid, D.; Oumokhtar, B.; Lyoussi, B.; Romeo, F.V. Antioxidant and antibacterial effects of pollen extracts on human multidrug-resistant pathogenic bacteria. *J. Food Qual.* **2021**, *2021*, 5560182. [[CrossRef](#)]
28. Akroum, S. Antifungal activity of acetone extracts from *Punica granatum* L., *Quercus suber* L. and *Vicia faba* L. *J. Mycol. Médicale* **2017**, *27*, 83–89. [[CrossRef](#)]
29. O. Elansary, H.; Szopa, A.; Kubica, P.; Ekiert, H.; A. Mattar, M.; Al-Yafrasi, M.A.; El-Ansary, D.O.; Zin El-Abedin, T.K.; Yessoufou, K. Polyphenol profile and pharmaceutical potential of *Quercus* spp. bark extracts. *Plants* **2019**, *8*, 486. [[CrossRef](#)]
30. Dania, V.O.; Fadina, O.O.; Ayodele, M.; Kumar, P.L. Efficacy of *Oryza sativa* husk and *Quercus phillyraeoides* extracts for the in vitro and in vivo control of fungal rot disease of white yam (*Dioscorea rotundata* Poir). *SpringerPlus* **2014**, *3*, 711. [[CrossRef](#)]
31. Gul, F.; Khan, K.M.; Adhikari, A.; Zafar, S.; Akram, M.; Khan, H.; Saeed, M. Antimicrobial and antioxidant activities of a new metabolite from *Quercus incana*. *Nat. Prod. Res.* **2016**, *31*, 1901–1909. [[CrossRef](#)] [[PubMed](#)]
32. Iturritxa, E.; Trask, T.; Mesanza, N.; Raposo, R.; Elvira-Recuenco, M.; Patten, C. Biocontrol of *Fusarium circinatum* infection of young *Pinus radiata* trees. *Forests* **2017**, *8*, 32. [[CrossRef](#)]
33. Seseni, L.; Regnier, T.; Roux-van der Merwe, M.P.; Mogale, E.; Badenhorst, J. Control of *Fusarium* spp. causing damping-off of pine seedlings by means of selected essential oils. *Ind. Crops Prod.* **2015**, *76*, 329–332. [[CrossRef](#)]
34. Lee, Y.-S.; Kim, J.; Lee, S.-G.; Oh, E.; Shin, S.-C.; Park, I.-K. Effects of plant essential oils and components from Oriental sweetgum (*Liquidambar orientalis*) on growth and morphogenesis of three phytopathogenic fungi. *Pestic. Biochem. Physiol.* **2009**, *93*, 138–143. [[CrossRef](#)]
35. Lee, Y.-S.; Kim, J.; Shin, S.-C.; Lee, S.-G.; Park, I.-K. Antifungal activity of Myrtaceae essential oils and their components against three phytopathogenic fungi. *Flavour Fragr. J.* **2008**, *23*, 23–28. [[CrossRef](#)]
36. Lukovic, J.; Potocnik, I.; Rekanovic, E.; Milijasevic-Marcic, S.; Todorovic, B.; Kostic, M.; Radulovic, Z. Toxicity of plant essential oils to *Cryphonectria parasitica* (Murr.) Barr, the causal agent of chestnut blight. *Pestic. Fitomedicina* **2019**, *34*, 89–96. [[CrossRef](#)]
37. Kim, J.; Lee, Y.S.; Lee, S.G.; Shin, S.C.; Park, I.K. Fumigant antifungal activity of plant essential oils and components from West Indian bay (*Pimenta racemosa*) and thyme (*Thymus vulgaris*) oils against two phytopathogenic fungi. *Flavour Fragr. J.* **2008**, *23*, 272–277. [[CrossRef](#)]
38. Castillo-Reyes, F.; Hernández-Castillo, F.D.; Clemente-Constantino, J.A.; Gallegos-Morales, G.; Rodríguez-Herrera, R.; Noé-Aguilar, C. In vitro antifungal activity of polyphenols-rich plant extracts against *Phytophthora cinnamomi* Rands. *Afr. J. Agric. Res.* **2015**, *10*, 4554–4560. [[CrossRef](#)]
39. Giamperi, L.; Fraternali, D.; Ricci, D. The in vitro action of essential oils on different organisms. *J. Essent. Oil Res.* **2011**, *14*, 312–318. [[CrossRef](#)]
40. Carvajal, M.A.; Vergara, A.P.; Santander, R.; Osorio, M.E. Chemical composition and anti-phytopathogenic activity of the essential oil of *Beilschmiedia miersii*. *Nat. Prod. Commun.* **2016**, *11*, 1367–1372. [[CrossRef](#)]
41. Moiteiro, C.; Esteves, T.; Ramalho, L.; Rojas, R.; Alvarez, S.; Zacchino, S.; Bragança, H. Essential oil characterization of two Azorean *Cryptomeria japonica* populations and their biological evaluations. *Nat. Prod. Commun.* **2013**, *8*, 1785–1790. [[CrossRef](#)]
42. Martins, J.; Batista, T.; Pinto, G.; Canhoto, J. Seasonal variation of phenolic compounds in strawberry tree (*Arbutus unedo* L.) leaves and inhibitory potential on *Phytophthora cinnamomi*. *Trees* **2021**, *35*, 1571–1586. [[CrossRef](#)]
43. Leadbeater, A.J. Plant Health Management: Fungicides and Antibiotics. In *Encyclopedia of Agriculture and Food Systems*; Van Alfen, N.K., Ed.; Academic Press: Amsterdam, The Netherlands, 2014; pp. 408–424. [[CrossRef](#)]
44. Benalcázar Villalba, S.M. *Sensibilidad In Vitro de Fusarium spp. Asociado a Muerte de Plantulas de Pinus Radiata y Pinus Patula a Fungicidas de Diferente modo de Acción*; Polytechnic School of Chimborazo: Riobamba, Ecuador, 2021.
45. González-Varela, G.; González, A.J. In vitro sensitivity of *Cryphonectria parasitica* to six agrochemicals. *Australas. Plant Dis. Notes* **2007**, *2*, 109–110. [[CrossRef](#)]
46. Zhao, X.-L.; Chen, H.; Zhong, K.-K.; Li, L.; Kong, X.-H. Myo-inositol as an adjuvant to florfenicol against *Aeromonas hydrophila* infection in common carp *Cyprinus carpio*. *FEMS Microbiol. Lett.* **2018**, *365*, fny212. [[CrossRef](#)]
47. Ratiu, I.A.; Al-Suod, H.; Ligor, M.; Ligor, T.; Krakowska, A.; Górecki, R.; Buszewski, B. Simultaneous determination of cyclitols and sugars following a comprehensive investigation of 40 plants. *Food Anal. Methods* **2019**, *12*, 1466–1478. [[CrossRef](#)]
48. Elsherbiny, E.A.; Safwat, N.A.; Elaasser, M.M. Fungitoxicity of organic extracts of *Ocimum basilicum* on growth and morphogenesis of *Bipolaris* species (teleomorph *Cochliobolus*). *J. Appl. Microbiol.* **2017**, *123*, 841–852. [[CrossRef](#)]

49. El-Saadony, M.T.; Saad, A.M.; Elakkad, H.A.; El-Tahan, A.M.; Alshahrani, O.A.; Alshilawi, M.S.; El-Sayed, H.; Amin, S.A.; Ahmed, A.I. Flavoring and extending the shelf life of cucumber juice with aroma compounds-rich herbal extracts at 4 °C through controlling chemical and microbial fluctuations. *Saudi J. Biol. Sci.* **2022**, *29*, 346–354. [[CrossRef](#)]
50. Shafiei, S.N.S.; Ahmad, K.; Ikhsan, N.; Ismail, S.I.; Sijam, K. Antibacterial activity of *Acacia* spp. leaves extracts against *Xanthomonas oryzae* pv. *oryzae* and screening for active phytochemical contents. *IOSR J. Agric. Vet. Sci.* **2017**, *10*, 49–60.
51. Langa-Lomba, N.; Sánchez-Hernández, E.; Buzón-Durán, L.; González-García, V.; Casanova-Gascón, J.; Martín-Gil, J.; Martín-Ramos, P. Activity of anthracenediones and flavoring phenols in hydromethanolic extracts of *Rubia tinctorum* against grapevine phytopathogenic fungi. *Plants* **2021**, *10*, 1527. [[CrossRef](#)]
52. Ryder, N.S. Terbinafine: Mode of action and properties of the squalene epoxidase inhibition. *Br. J. Dermatol.* **1992**, *126*, 2–7. [[CrossRef](#)]
53. Elewski, B.E. Mechanisms of action of systemic antifungal agents. *J. Am. Acad. Dermatol.* **1993**, *28*, S28–S34. [[CrossRef](#)]
54. Ma, Q.-Z.; Wu, F.-J.; Liu, Q.-M.; Li, K.-F.; Xie, C.-P. Analysis on volatile organic compounds of *Artocarpus lingnanensis* for urban environmental management. In Proceedings of the 2010 International Conference on Management and Service Science, Wuhan, China, 24–26 August 2010; pp. 1–4.
55. Antoci, V.; Oniciuc, L.; Amariuca-Mantu, D.; Moldoveanu, C.; Mangalagiu, V.; Amarandei, A.M.; Lungu, C.N.; Dunca, S.; Mangalagiu, I.I.; Zbancioc, G. Benzoquinoline derivatives: A straightforward and efficient route to antibacterial and antifungal agents. *Pharmaceuticals* **2021**, *14*, 335. [[CrossRef](#)]
56. Radoykova, T.; Stanulov, K.; Nenkova, S. Lignin-derived methoxyphenols as antioxidant additives for gasoline. *Oxid. Commun.* **2011**, *34*, 463.
57. Miller, M.B.; Bassler, B.L. Quorum sensing in bacteria. *Annu. Rev. Microbiol.* **2001**, *55*, 165–199. [[CrossRef](#)]
58. Vernon, D.M.; Ostrem, J.A.; Bohnert, H.J. Stress perception and response in a facultative halophyte: The regulation of salinity-induced genes in *Mesembryanthemum crystallinum*. *Plant Cell Environ.* **1993**, *16*, 437–444. [[CrossRef](#)]
59. Naika, R.; Pavani, P. Evaluation of antibacterial activity and GCMS analysis of *Zanthoxylum ovalifolium* fruit extracts. *J. Pharm. Res. Int.* **2021**, *33*, 7–17. [[CrossRef](#)]
60. Sánchez-Hernández, E.; Martín-Ramos, P.; Martín-Gil, J.; Santiago-Aliste, A.; Hernández-Navarro, S.; Oliveira, R.; González-García, V. Bark extract of *Uncaria tomentosa* L. for the control of strawberry phytopathogens. *Horticulturae* **2022**, *8*, 672. [[CrossRef](#)]
61. Adams, R.P. *Identification of Essential Oil Components by Gas Chromatography/Mass Spectroscopy*, 4th ed.; Allured Publishing Corp.: Carol Stream, IL, USA, 2007; p. 804.
62. Arendrup, M.C.; Cuenca-Estrella, M.; Lass-Flörl, C.; Hope, W. EUCAST technical note on the EUCAST definitive document EDef 7.2: Method for the determination of broth dilution minimum inhibitory concentrations of antifungal agents for yeasts EDef 7.2 (EUCAST-AFST). *Clin. Microbiol. Infect.* **2012**, *18*, E246–E247. [[CrossRef](#)] [[PubMed](#)]
63. Matheron, M.E. Seasonal variation in susceptibility of *Juglans hindsii* and Paradox rootstocks of English walnut trees to *Phytophthora citricola*. *Phytopathology* **1985**, *75*, 970–972. [[CrossRef](#)]
64. Si, Y.; Haxim, Y.; Wang, L. Optimum sterilization method for in vitro cultivation of dimorphic seeds of the succulent halophyte *Suaeda aralocaspica*. *Horticulturae* **2022**, *8*, 289. [[CrossRef](#)]