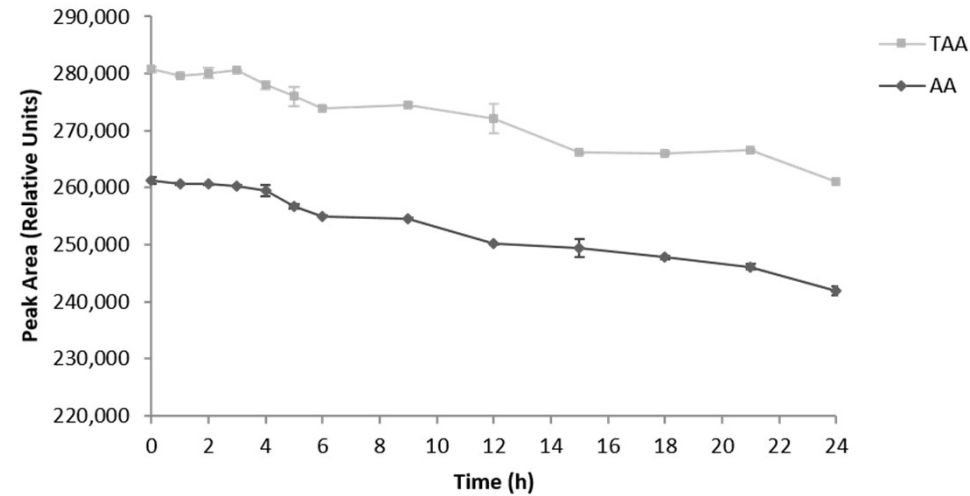
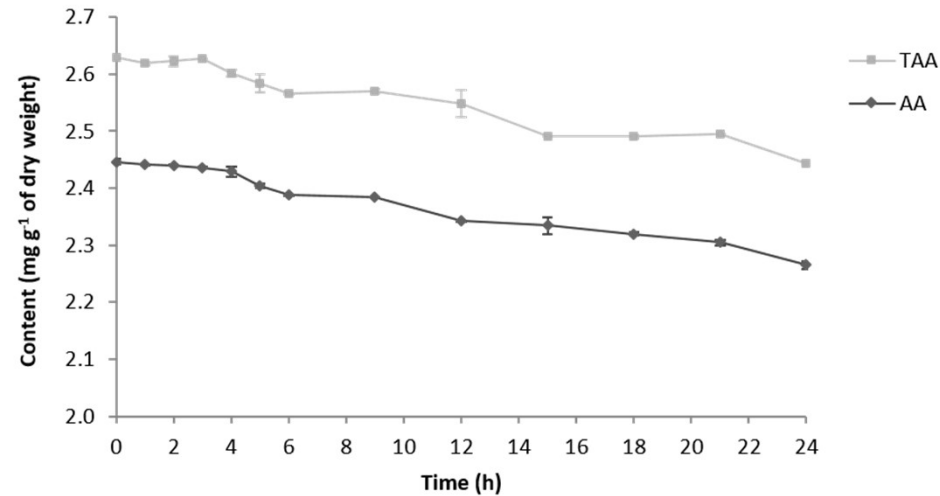


### A AA and TAA peak areas throughout 24 h



### B AA and TAA content throughout 24 h



**Supplemental File 1. AA and TAA stability at 5 °C over 24 h.** (A) AA and TAA peak areas throughout 24 h. (B) AA and TAA content (mg g<sup>-1</sup> of dry weight) throughout 24 h. Bars represent the standard deviations of two technical replicates (n=2) kept in the autosampler at 5 °C and protected from exposure to light.